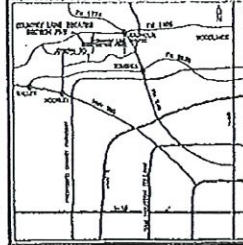


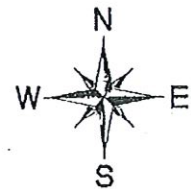
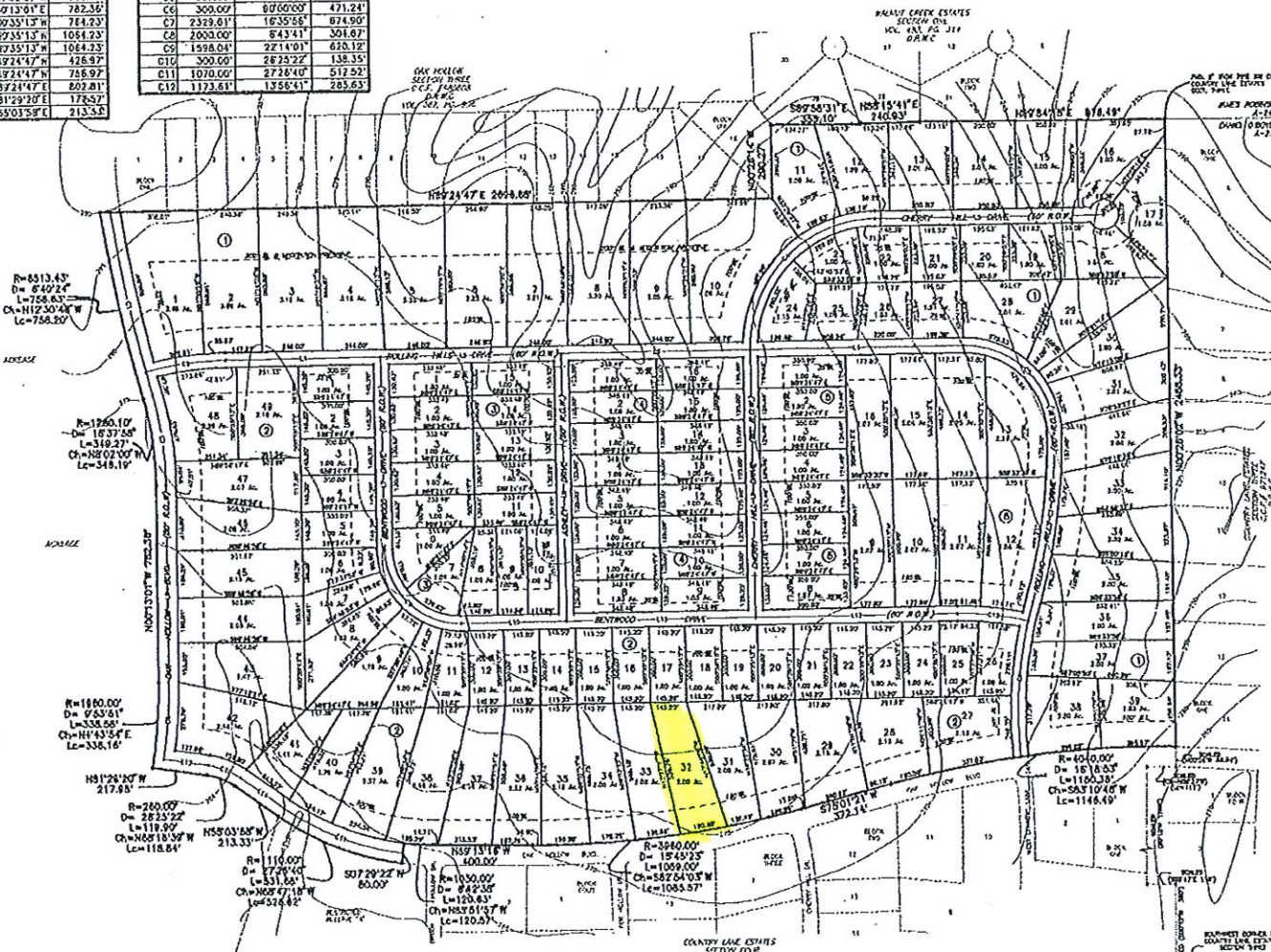
# Plat Record B-138

**-CENTERLINE DATA-**

LINE	BEARING	DISTANCE	CURVE	RADIUS	DELTA	ARC
L1	N89°24'47"E	623.84'	C1	8473.43'	637°11'	747.93'
L2	N89°24'47"E	726.97'	C2	1278.19'	142°25'	321.26'
L3	N89°24'47"E	758.97'	C3	1320.10'	157°38'	360.18'
L4	N89°24'47"E	848.68'	C4	507.88'	80°09'10"	208.28'
L5	S89°33'57"W	914.12'	C5	357.13'	80°09'11"	651.84'
L6	S71°3'01"E	782.35'	C6	309.00'	80°06'00"	471.24'
L7	N0°35'13"W	744.23'	C7	2329.61'	16°35'56"	874.90'
L8	N0°35'13"W	1054.23'	C8	2003.00'	8°43'41"	304.87'
L9	N0°35'13"W	1054.23'	C9	1998.04'	27°14'01"	610.12'
L10	S89°24'47"W	426.97'	C10	300.00'	28°25'22"	138.35'
L11	S89°24'47"W	726.97'	C11	1070.00'	27°24'40"	511.52'
L12	N89°24'47"E	822.81'	C12	1173.61'	13°56'41"	285.63'
L13	S81°29'20"E	178.57'				
L14	S55°01'59"E	213.33'				



**-VICINITY MAP-**  
MONROE COUNTY KEY MAP  
PAGE 241, C



**FINAL PLAT**  
**COUNTRY LANE ESTATES**  
**SECTION FIVE**

135 RESIDENTIAL LOTS \* 5 BLOCKS  
A SUBDIVISION OF  
237.019 ACRES OF LAND IN THE  
DANIEL O'BOYLE SURVEY, A-233  
WALLER COUNTY, TEXAS

- NOTES:
1. THIS PROPERTY IS LOCATED WITHIN ZONE 'C' AND IS NOT WITHIN THE 100 YEAR FLOODPLAIN AS PER FEMA FIRM PANEL NUMBER 48064D 0100, EFFECTIVE DATE: DECEMBER 18, 1988.
  2. THERE IS HEREBY DEDICATED A 10' BUILDING LINE, UTILITY EASEMENT, AND DRAINAGE EASEMENT ALONG ALL SIDE AND REAR LOT LINES UNLESS OTHERWISE SHOWN.
  3. THERE IS HEREBY DEDICATED A 15' UTILITY EASEMENT ALONG BOTH SIDES OF ALL STREETS.
  4. "C" DENOTES A BUILDING LINE.

OWNER: STANLEY DEVELOPMENT CO.  
1330 BLUE BELL ROAD  
HOUSTON, TEXAS 77038

POWERS ENGINEERING  
4706 W. DAVIS - CONROE, TEXAS 77304