



Boundary

3004 Lynnwood Ln.
Valler County, Texas, AC +/-



Boundary

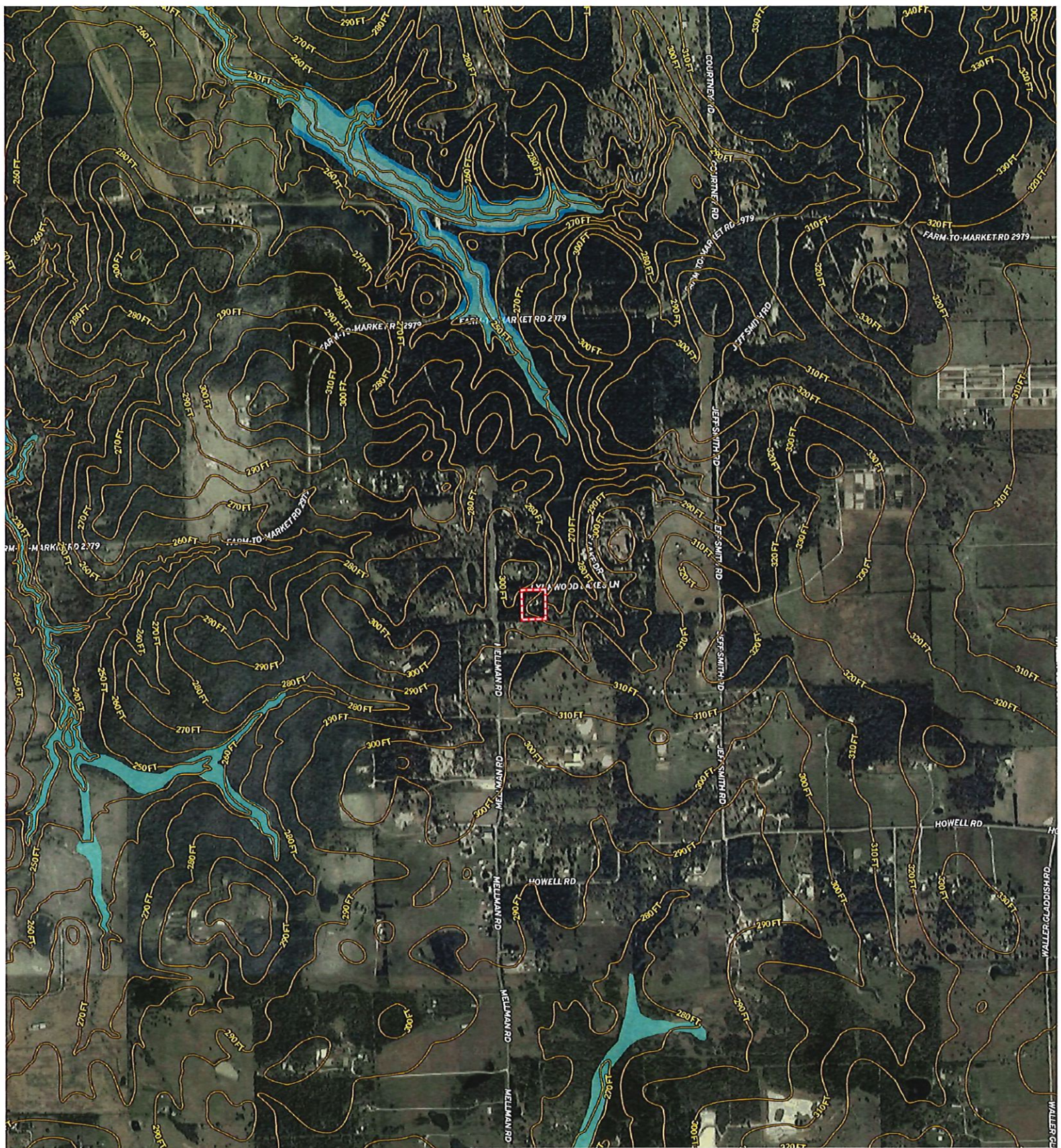
3007 Lynnwood Ln.
Valler County, Texas, AC +/-



Google 0 50 100 150 200ft
©2022 Airbus, Houston-Galveston Area Council, Maxar Technologies, Texas General Land Office, U.S. Geological Survey

Boundary

5504 LYNNWOOD LN
Valler County, Texas, AC +/-



Google Earth / Copernicus, Maxar Technologies, Texas General Land Office, U.S. Geological Survey, GCPARTNER/GE

- Boundary
- 100 Year Floodplain
- 500 Year Floodplain
- Floodway
- Special
- Unmapped/ Not Included