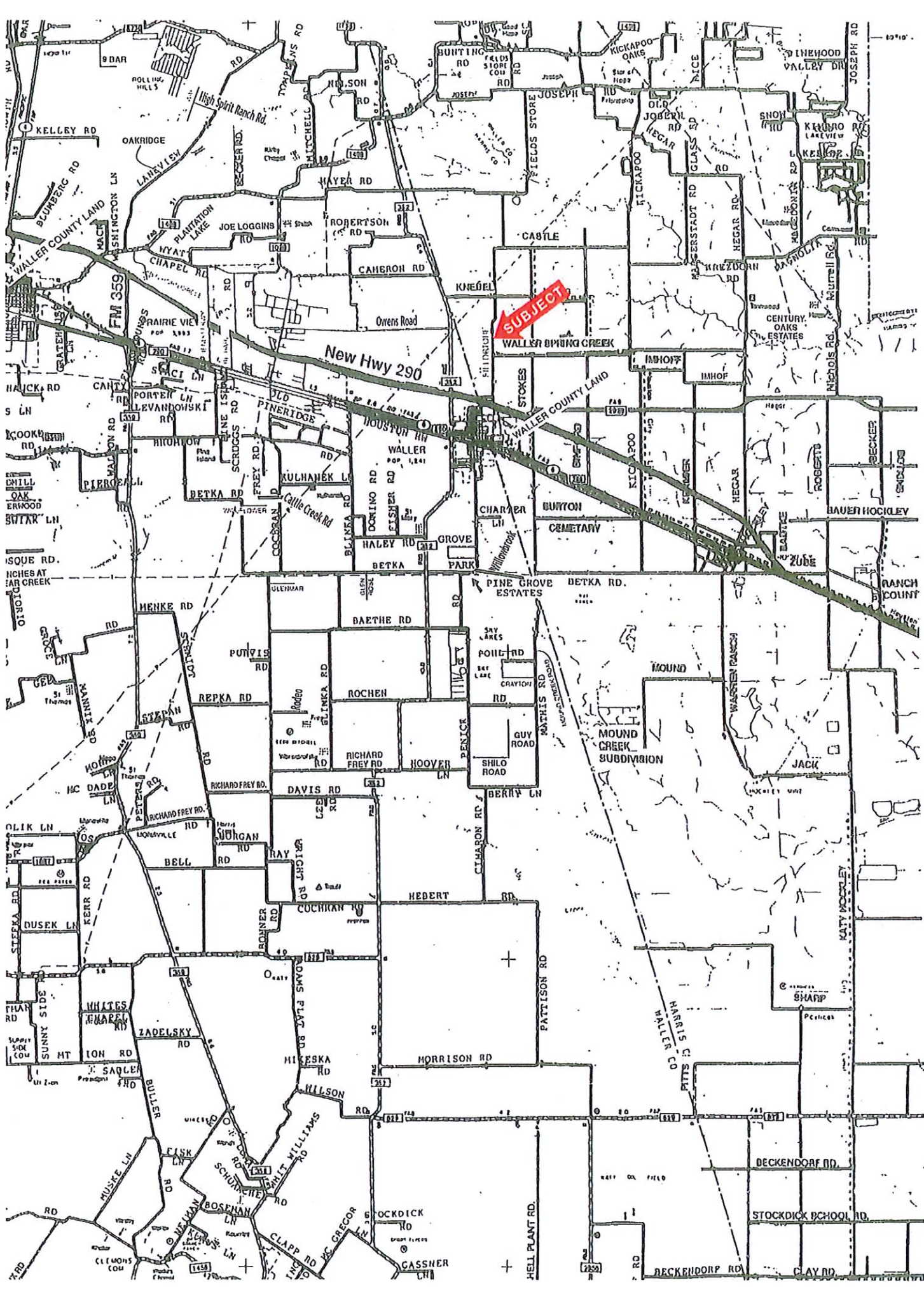


SUBJECT

New Hwy 290

WALLER SPRING CREEK



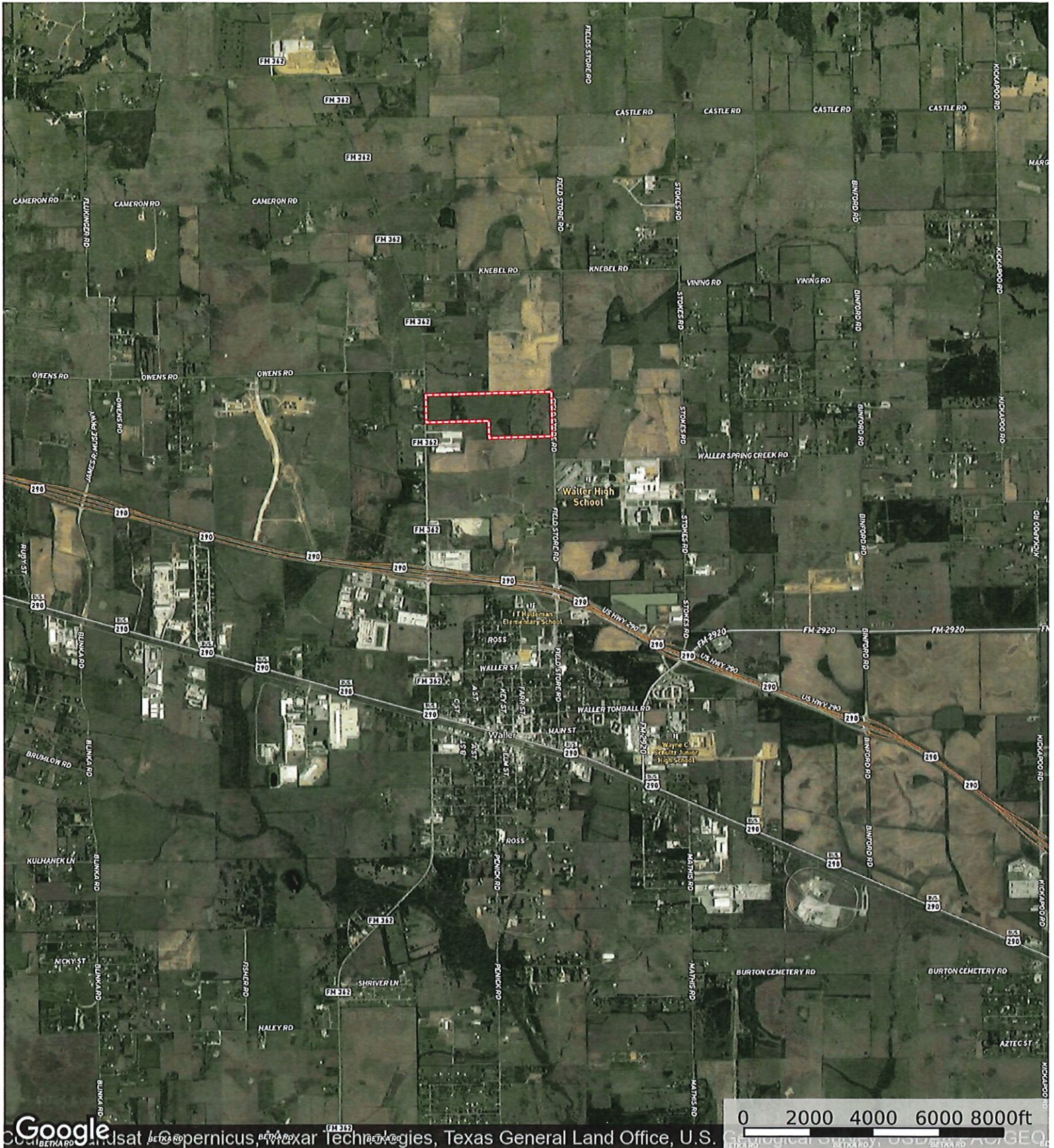
SUBJECT

New Hwy 290

WALLER SPRING CREEK

Fields Store & FM 362

Harris County, Waller County, Texas, AC +/-



Boundary

Timothy Phelan
P: (936) 372-9181

WallerCountyLand.com

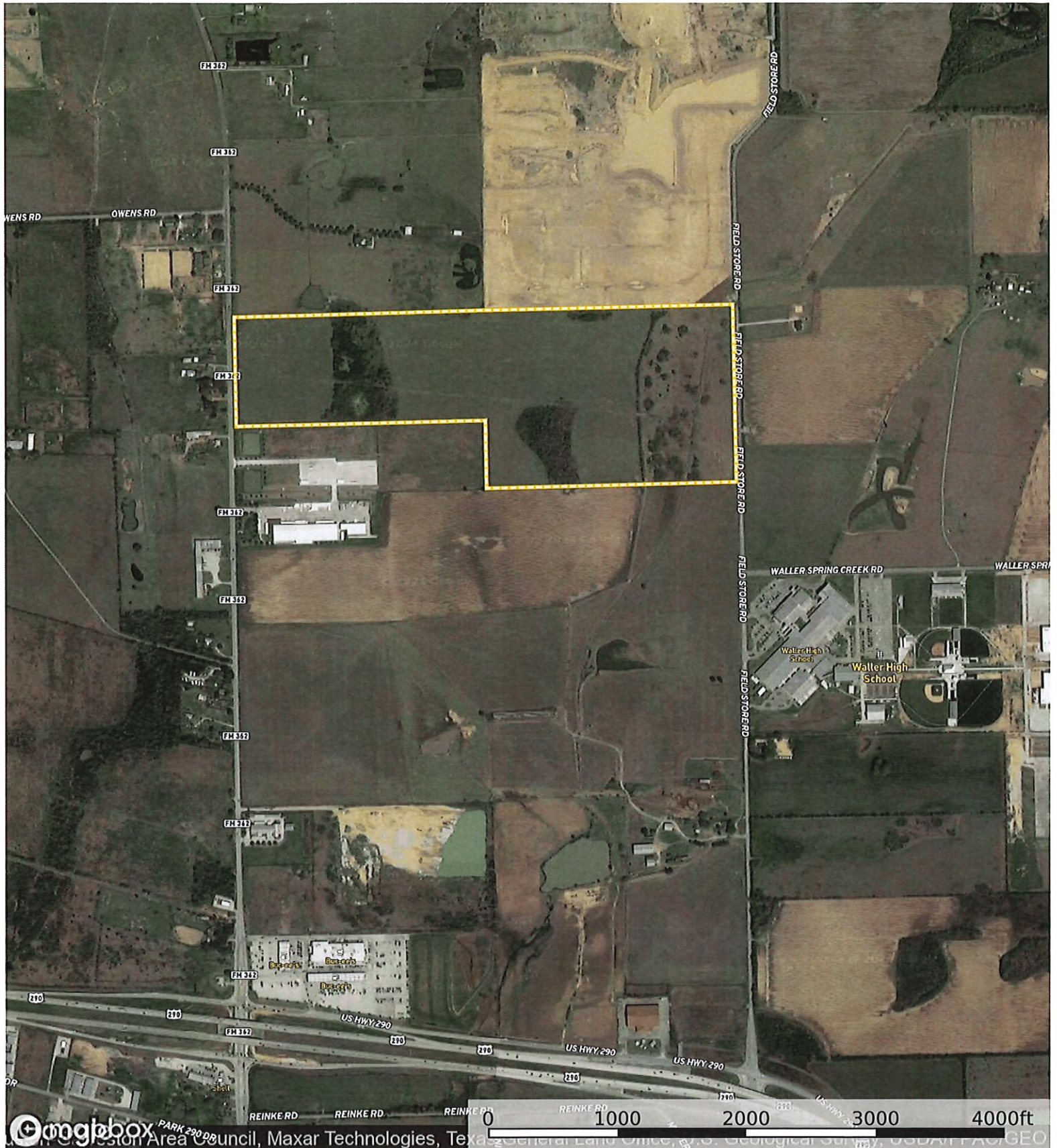
P.O. Box 1274, Waller, Texas 77484



The information contained herein was obtained from sources deemed to be reliable. Land id™ Services makes no warranties or guarantees as to the completeness or accuracy thereof.

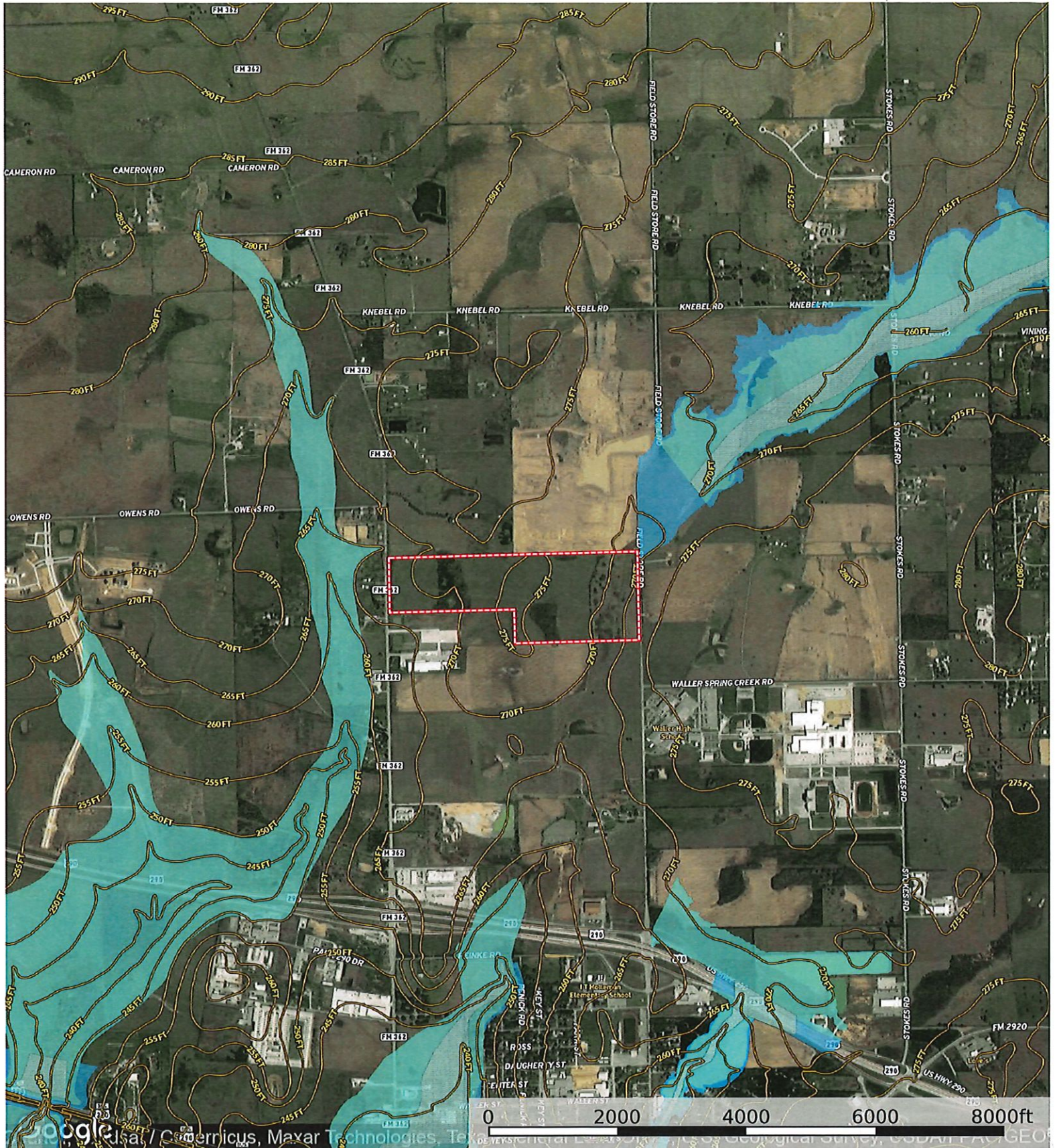
Fields Store & FM 362

Harris County, Waller County, Texas, AC +/-

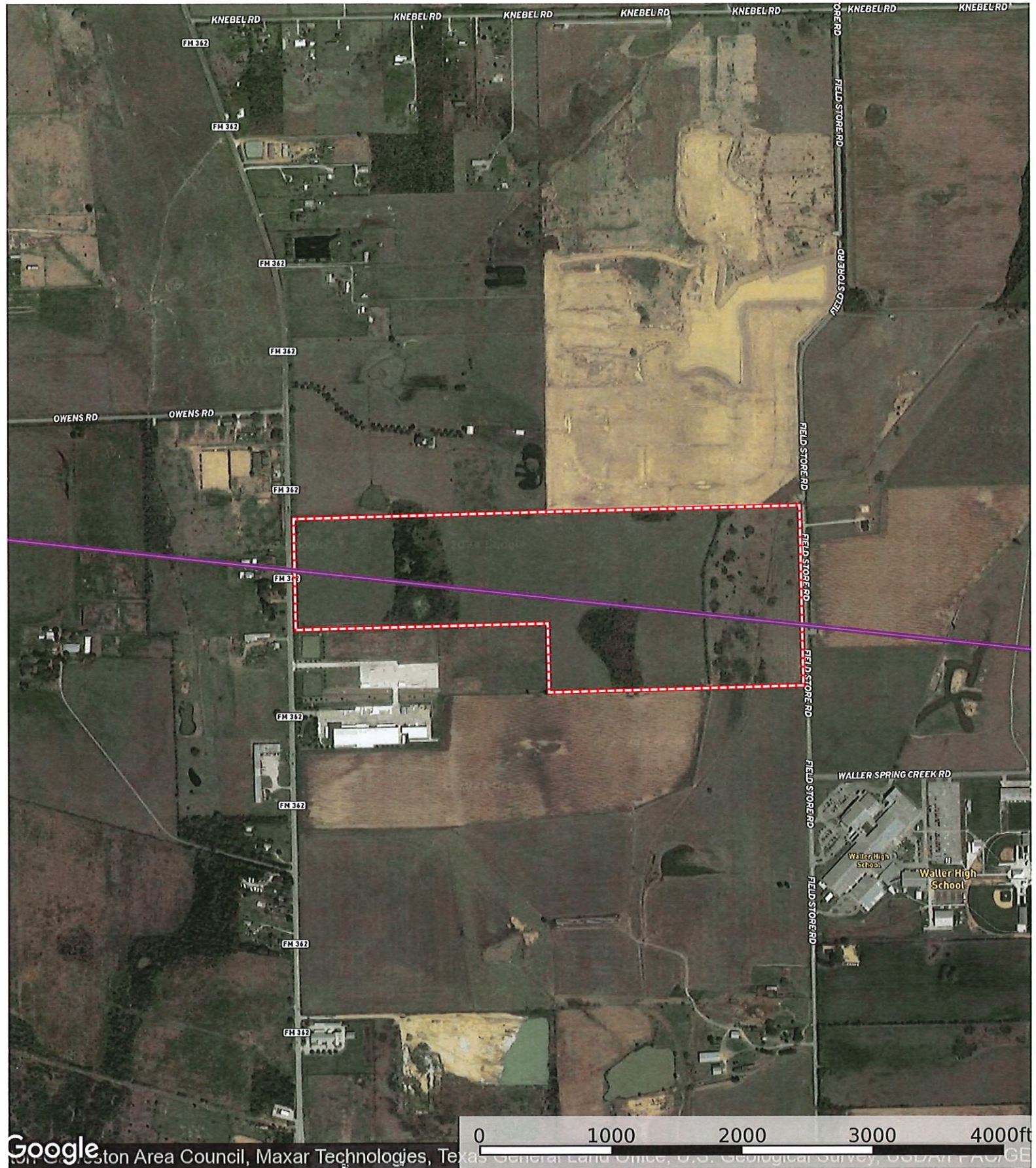


Boundary Boundary 1

Fields Store & FM 362
 Harris County, Waller County, Texas, AC +/-



- Boundary
- 100 Year Floodplain
- 500 Year Floodplain
- Floodway
- Special
- Unmapped/ Not Included



Google

© 2013 Google, Mapbox, OpenStreetMap contributors, TomTom, Garmin, Swatch, etc. All rights reserved. Google, the Google logo, and "Map data" are trademarks of Google Inc. in the U.S. and other countries. Maxar Technologies, Texas General Land Office, U.S. Geological Survey, USDA/NRCS, etc.

— Pipeline □ Boundary