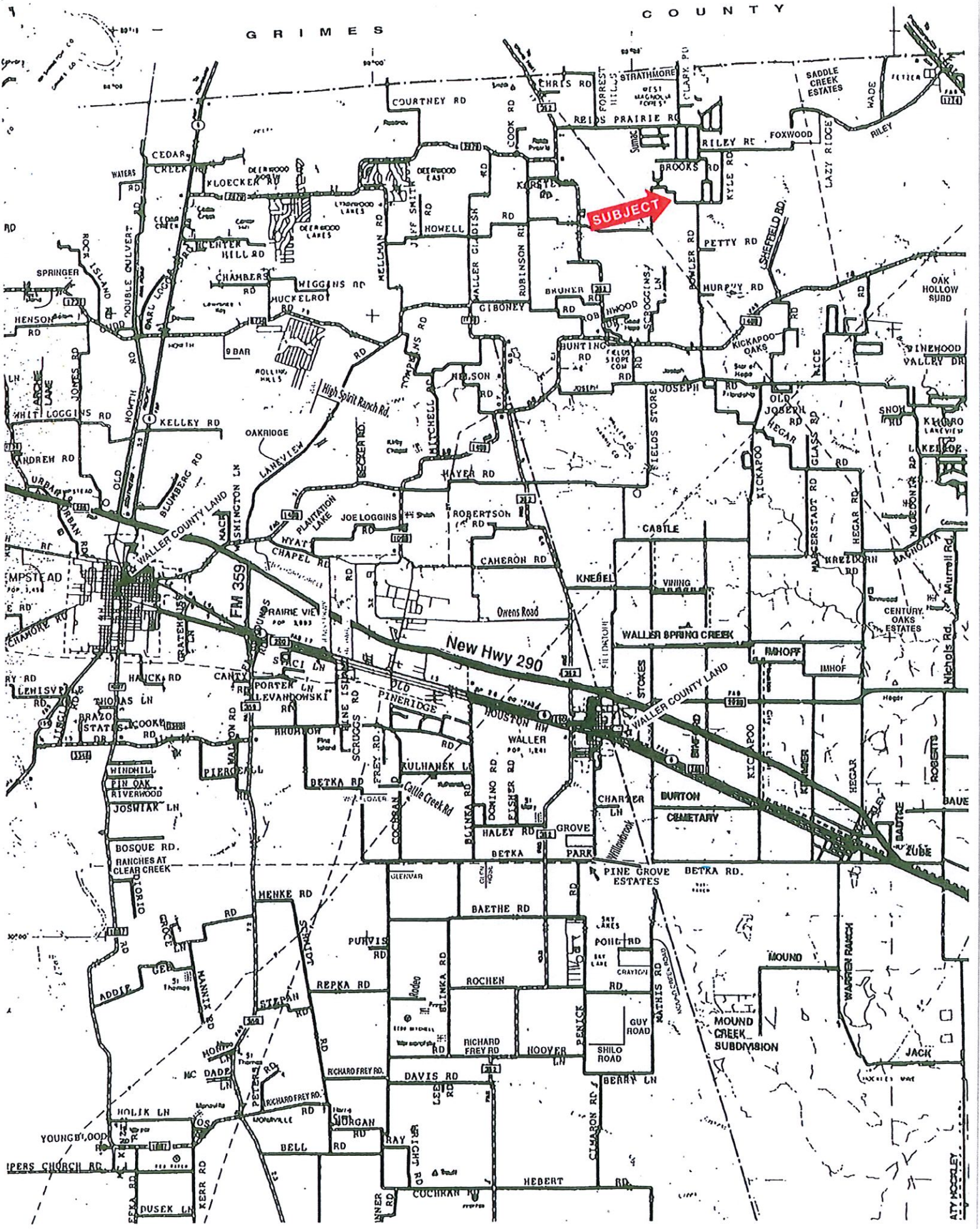
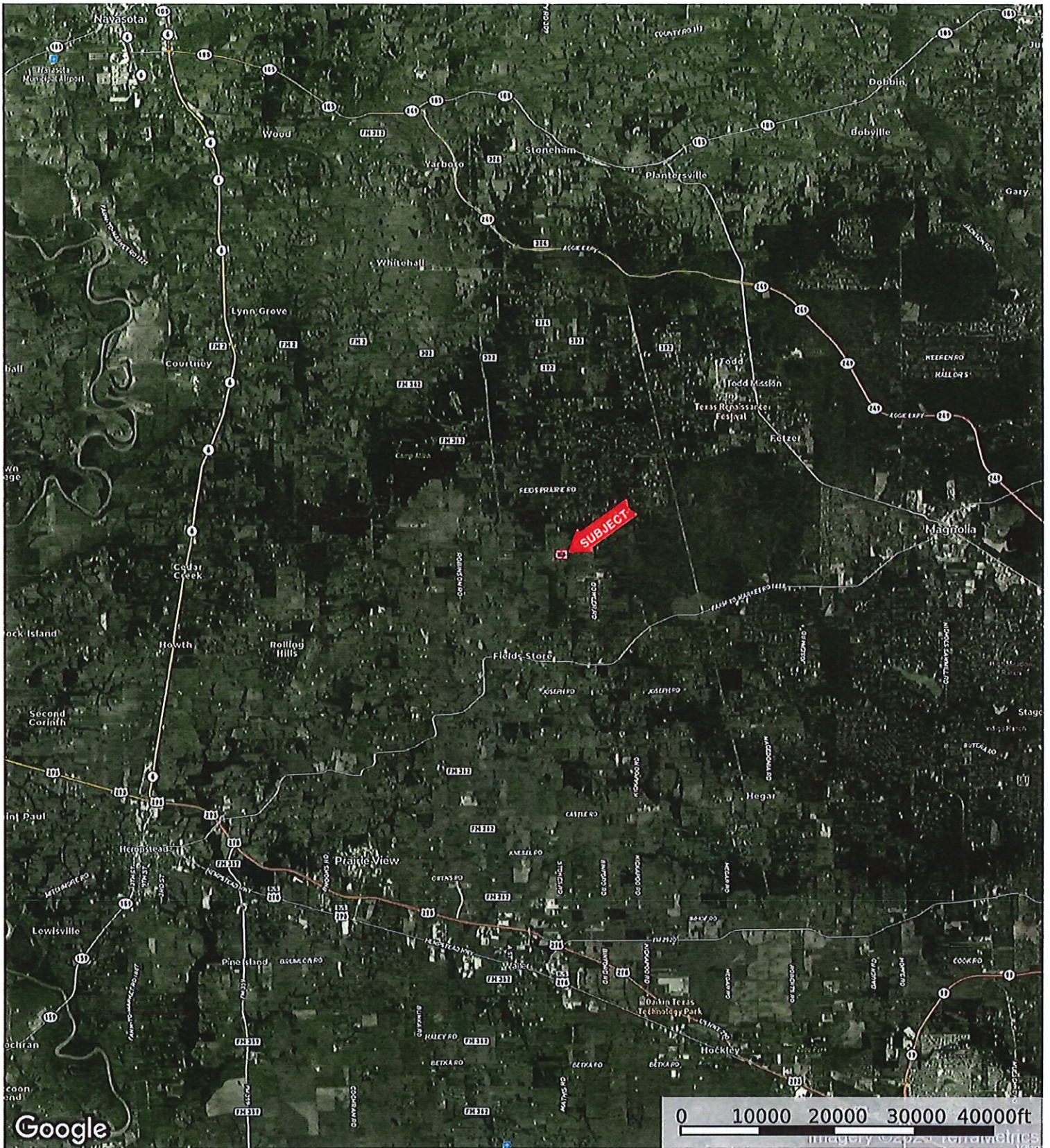


GRIMES COUNTY



30801 Howell Rd.
Waller County, Texas, AC +/-



 Boundary

30801 Howell Rd.
Waller County, Texas, AC +/-



11.335 ACRES

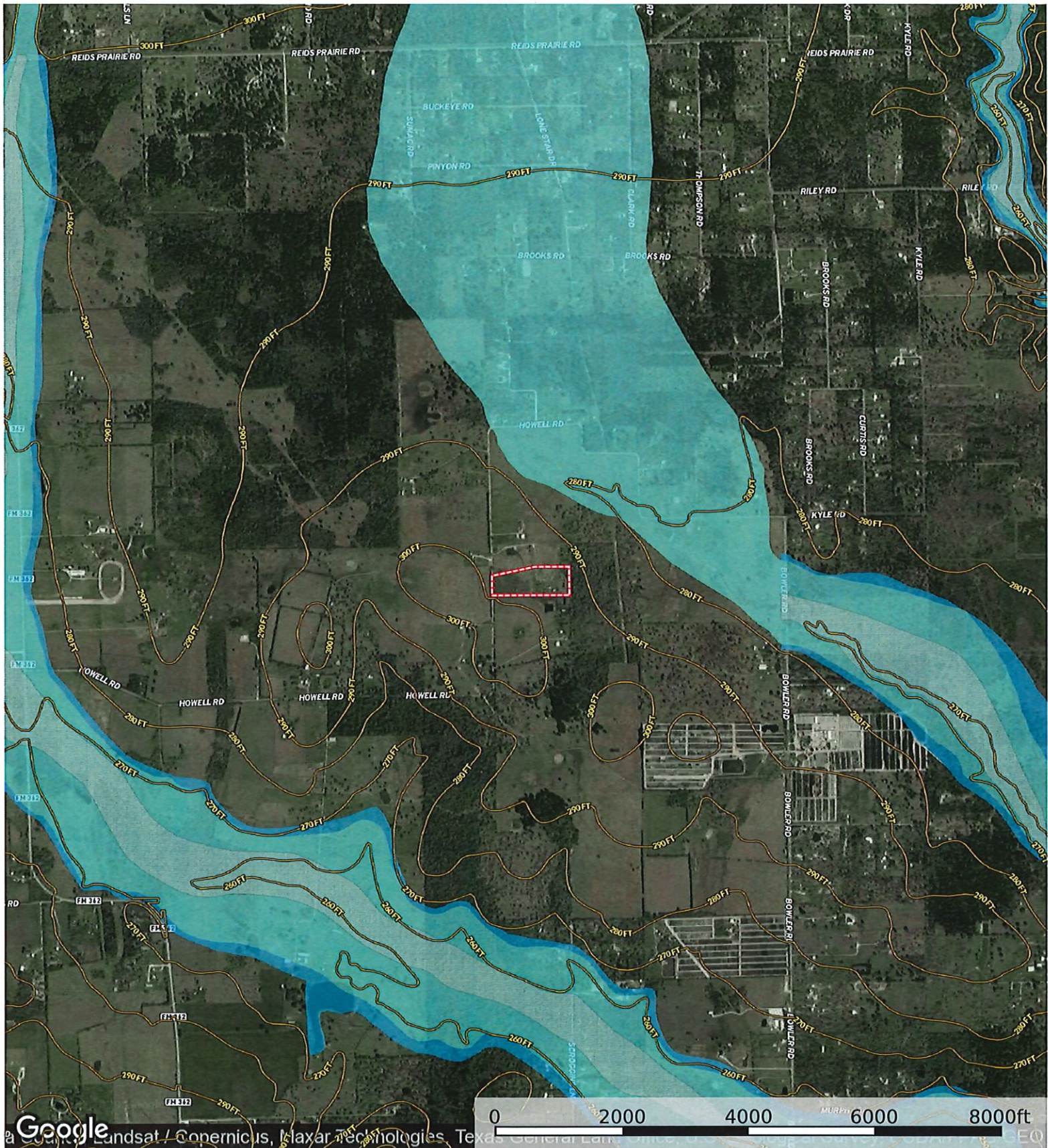
0 200 400 600 800ft

© 2023 Google LLC. All rights reserved. Google, the Google logo, and "Don't be evil" are trademarks of Google LLC. Other brands and product names are trademarks of their respective owners. Maxar Technologies, Texas General Land Office, U.S. Geological Survey, USDA/NRCS/Geo

Boundary

id. The information contained herein was obtained from sources deemed to be reliable. Land id™ Services makes no warranties or guarantees as to the completeness or accuracy thereof.

30801 Howell Rd.
Waller County, Texas, AC +/-



Google Landsat / Copernicus, Maxar Technologies, Texas General Land Office, and other sources. EQ

- Boundary
- 100 Year Floodplain
- 500 Year Floodplain
- Floodway
- Special
- Unmapped/ Not Included