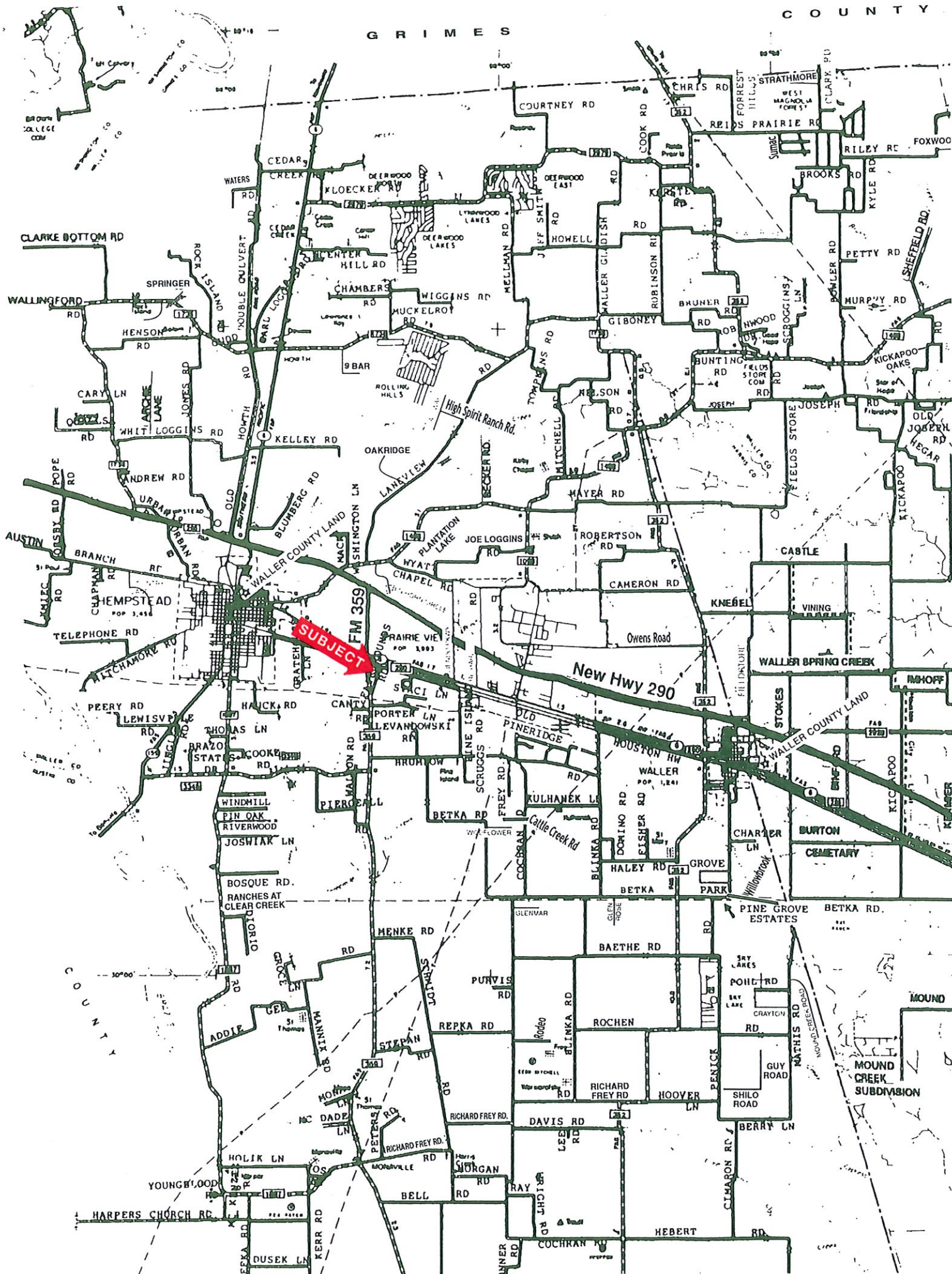


GRIMES

COUNTY



**SUBJECT**

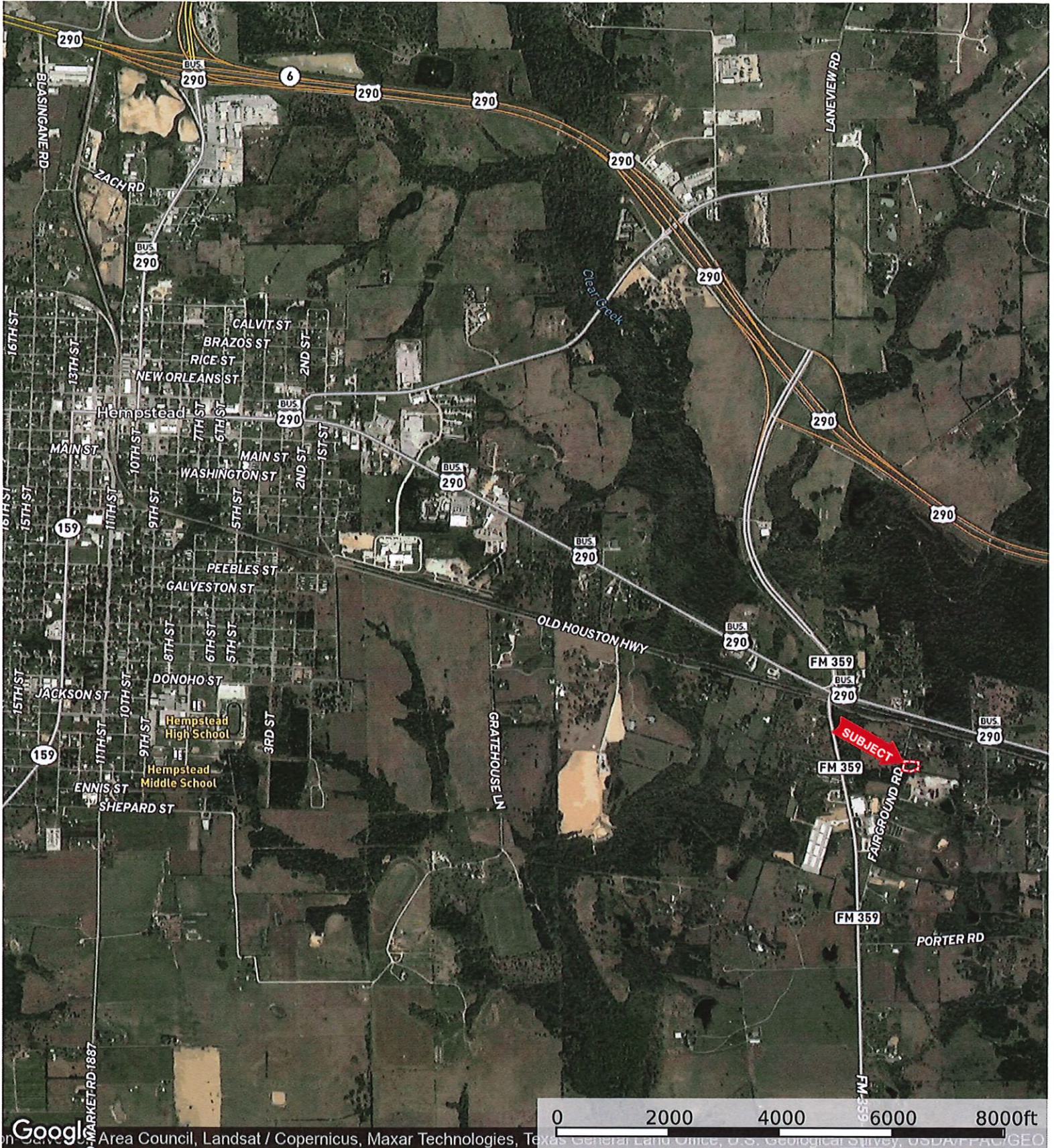
New Hwy 290

FM 359

COUNTY

MOUND CREEK SUBDIVISION

22116 Fairgrounds Rd.  
Waller County, Texas, AC +/-



Google Area Council, Landsat / Copernicus, Maxar Technologies, Texas General Land Office, U.S. Geological Survey, USDA NAD 83 GEO

Boundary

The information contained herein was obtained from sources deemed to be reliable. MapRight Services makes no warranties or guarantees as to the completeness or accuracy thereof.

22116 Fairgrounds Rd.  
Waller County, Texas, AC +/-



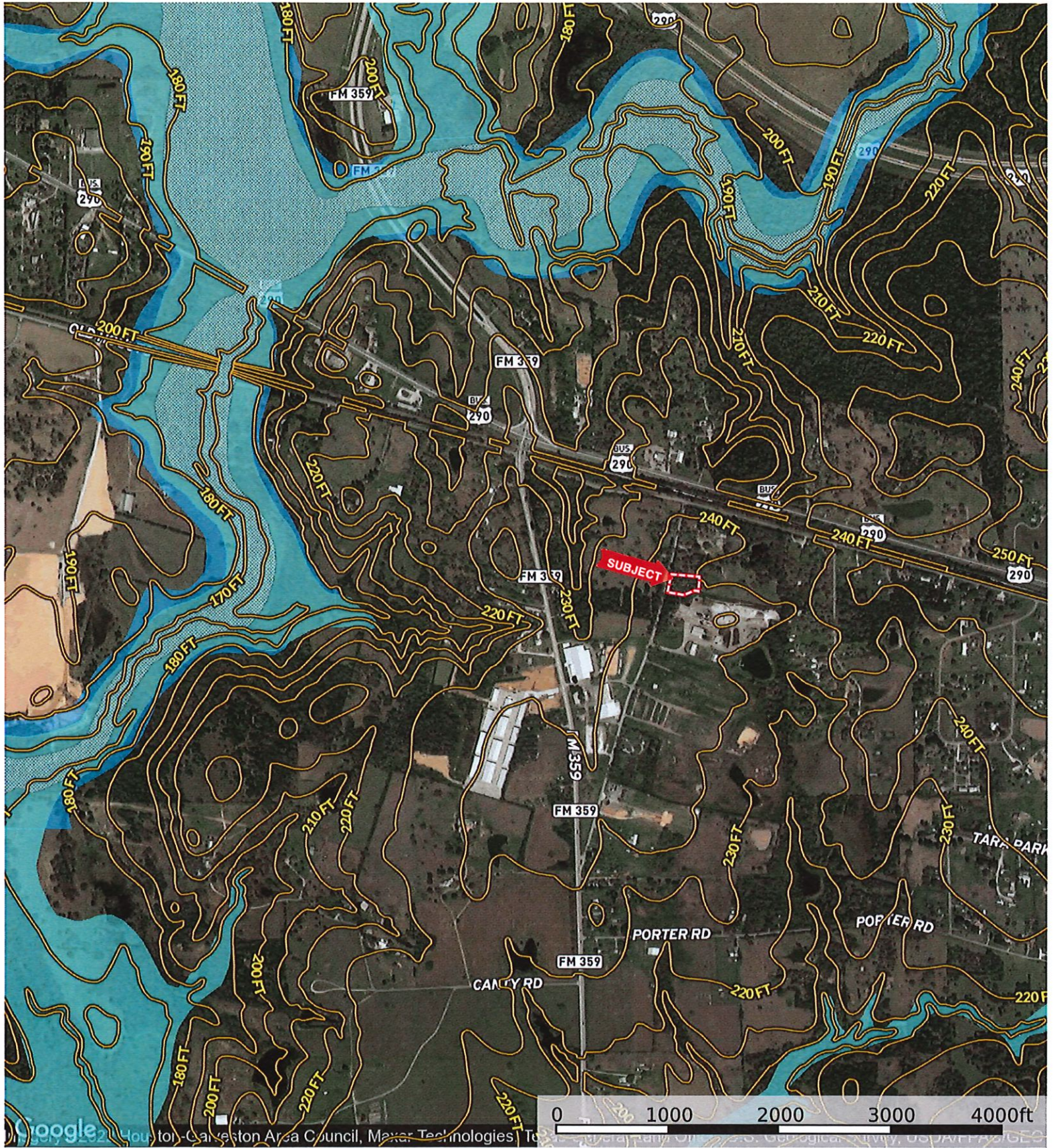
Google

Imagery ©2022 Houston-Galveston Area Council, Maxar Technologies, Texas General Land Office, U.S. Geological Survey

Boundary

**M** The information contained herein was obtained from sources deemed to be reliable. MapRight Services makes no warranties or guarantees as to the completeness or accuracy thereof.

22116 Fairgrounds Rd.  
Waller County, Texas, AC +/-



- Boundary
- 100 Year Floodplain
- 500 Year Floodplain
- Floodway
- Special
- Unmapped/ Not Included

The information contained herein was obtained from sources deemed to be reliable. MapRight Services makes no warranties or guarantees as to the completeness or accuracy thereof.