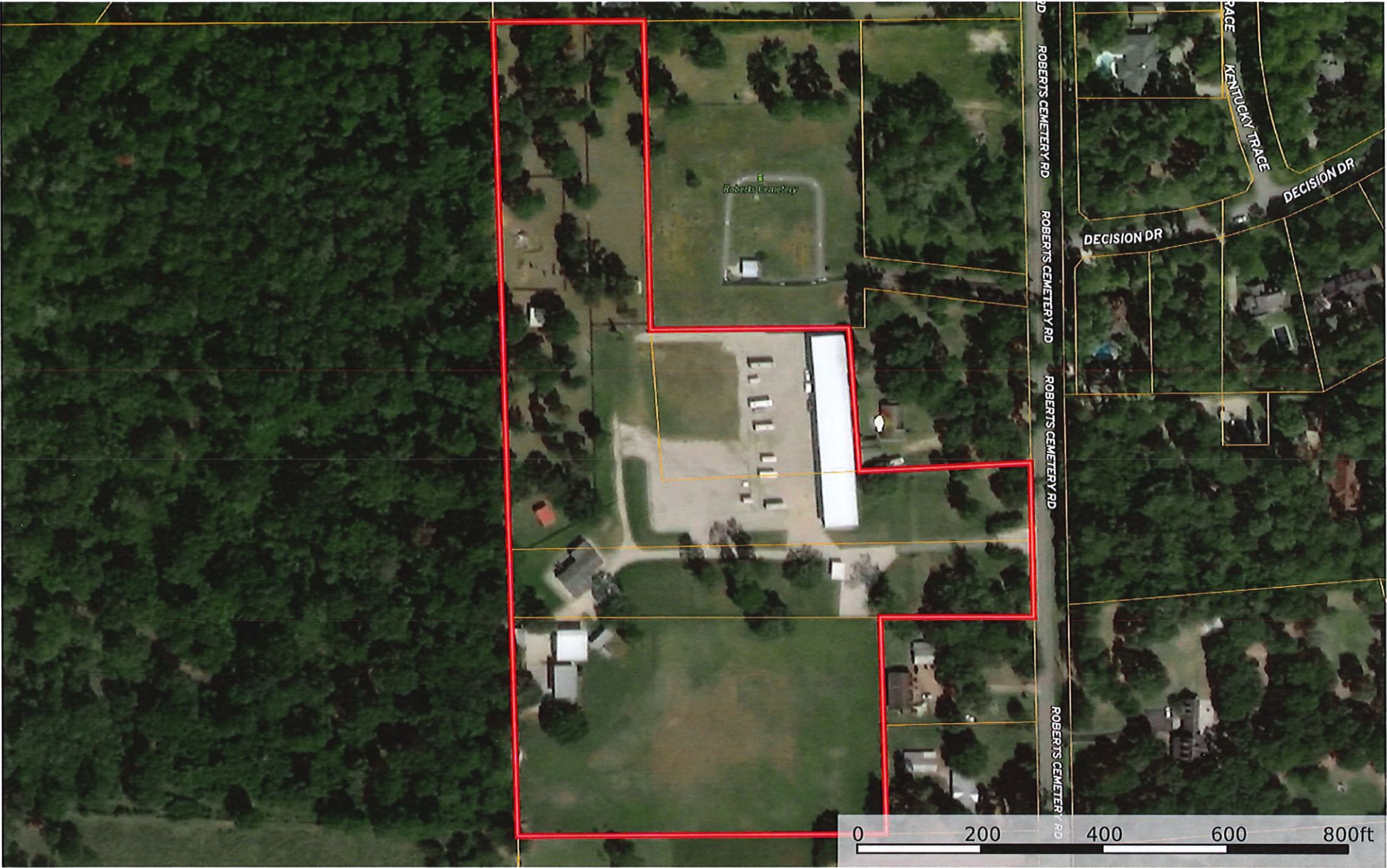


## **20329 Roberts Cemetery Rd.**

### **Amenities List**

- 15.2945 Acres
- 2400 Sq. Ft. Manufactured Home – Great office space or residential
- Spacious kitchen, dining & living area with wood floors
- Lots of closet & storage space
- 570 Sq. Ft. covered front porch
- 391 Sq. Ft. Airconditioned sunroom with outlets & lights
- Home is equipped with 36KW back-up generator
- Existing irrigation in place around home
  
- 40Ft. X 50Ft. Metal warehouse/shop building
- Building has three 8'W X 10'H overhead doors, one 12'W X 14'H door & two walk-through doors
- Building has sufficient lighting, outlets, half bath & warehouse sink
  
- 30Ft. X 50Ft. Metal warehouse/shop building
- Enclosed on one side & insulated with 12'X 12' roll-up door & one walk-through door
- The other half is 24'W X 14'H with open front.
  
- 50'X 315' Metal RV/boat storage building with lights & outlets
- 15' High with open front
- 22 Covered storage spaces & 44 uncovered spaces with room for more
- Huge lot with packed crushed concrete. Sufficient stabilized area for parking trucks & trailers, equipment storage, etc.
  
- Property is gated & accessed with personal code only
- Excess lighting throughout the property
- Existing security system in place on home & building
- Two 8'W X 20'L each, Cube storage containers with 20' X 20' covered storage between them
- A lot of the property is fenced pasture area. Lots of room for future development
- The entire property drains very well
- Cable & highspeed internet available
- Just a quarter mile north of FM 2920
- Easy access to US Hwy 290 & the Grand Pkwy

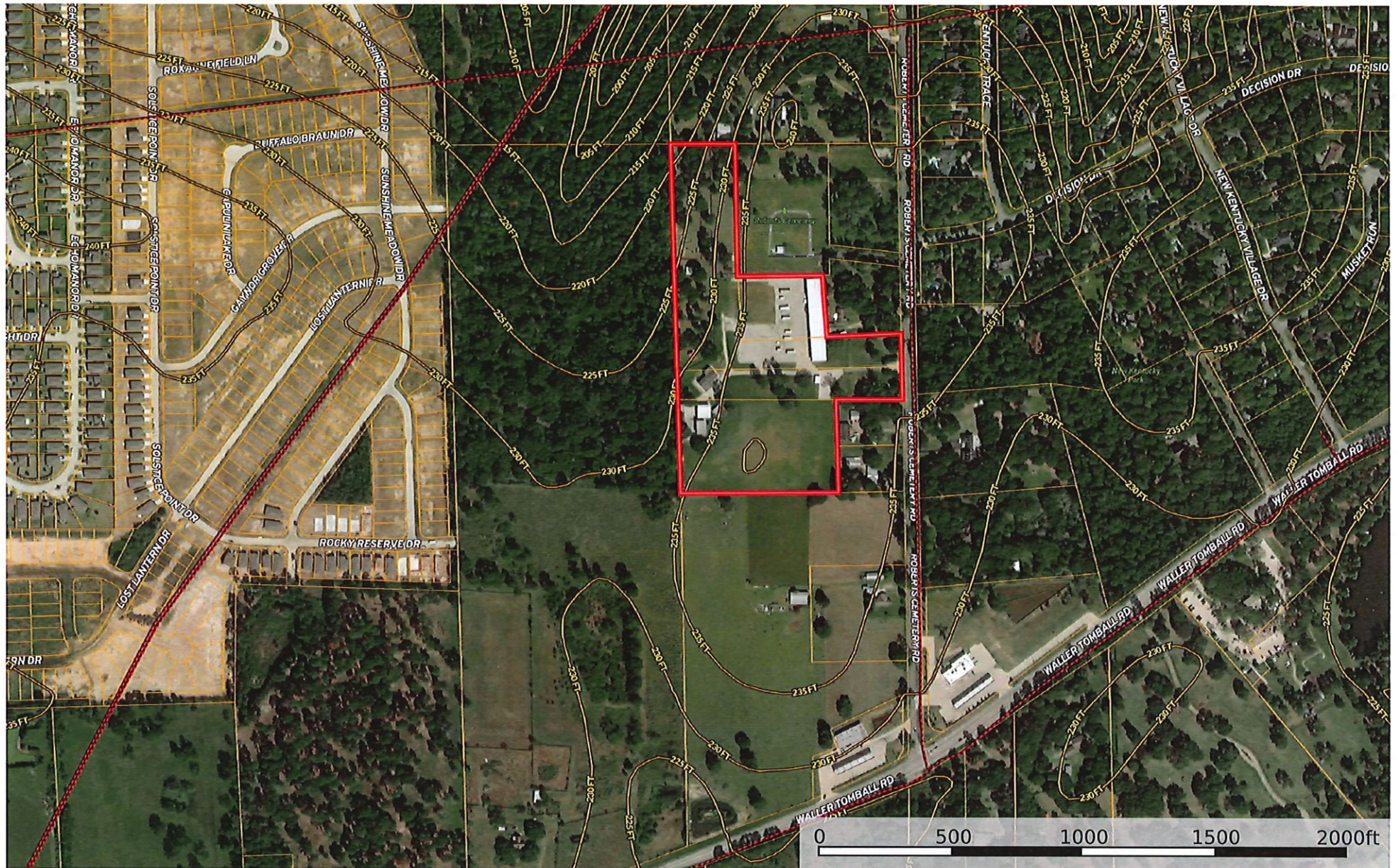
Texas, AC +/-



 Boundary



Texas, AC +/-



▮ Boundary
  100 Year Floodplain
  500 Year Floodplain
  Floodway
  Special
  Unmapped/ Not Included
 — Crude Oil
 — Natural Gas
 - - - Other



