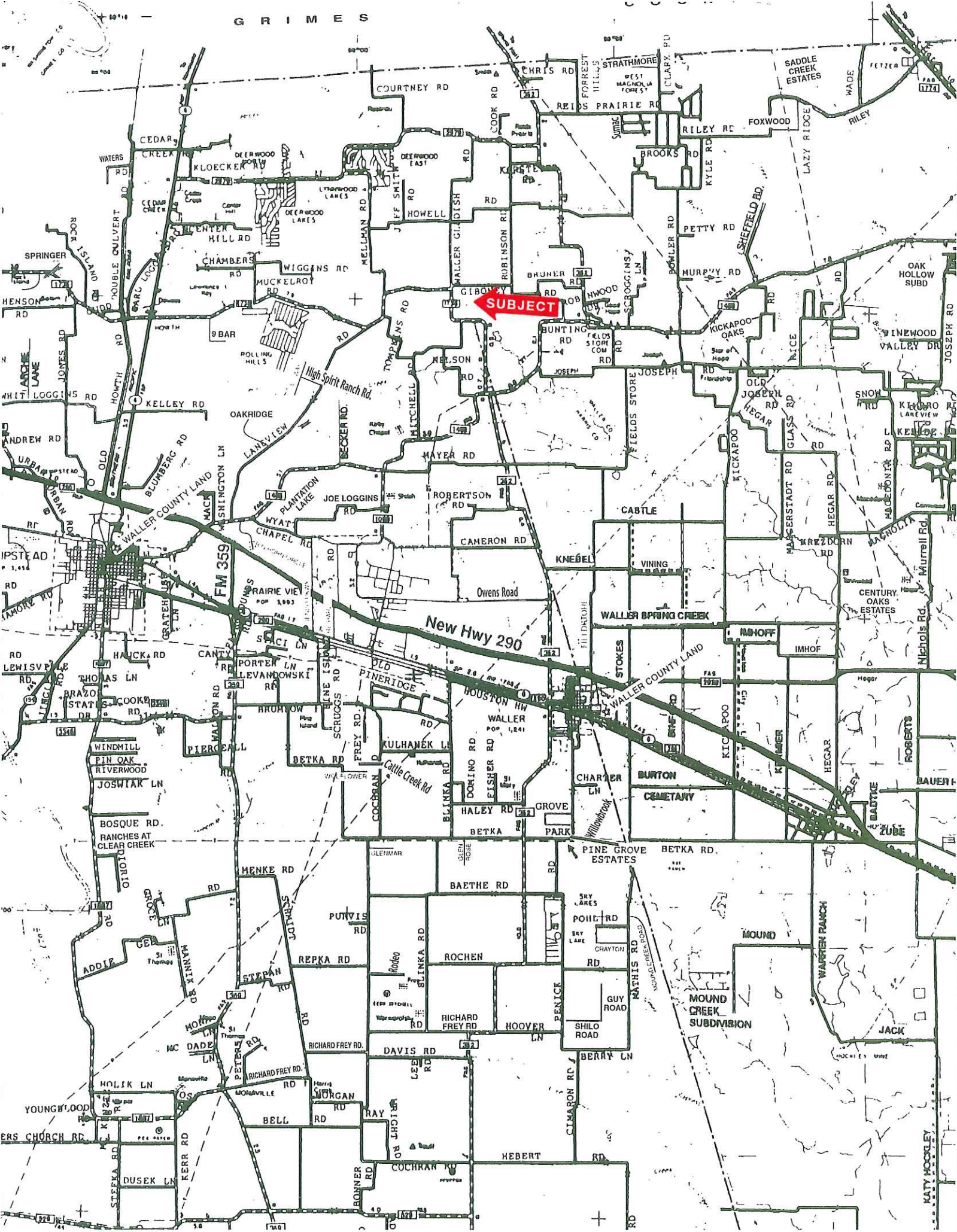


GRIMES



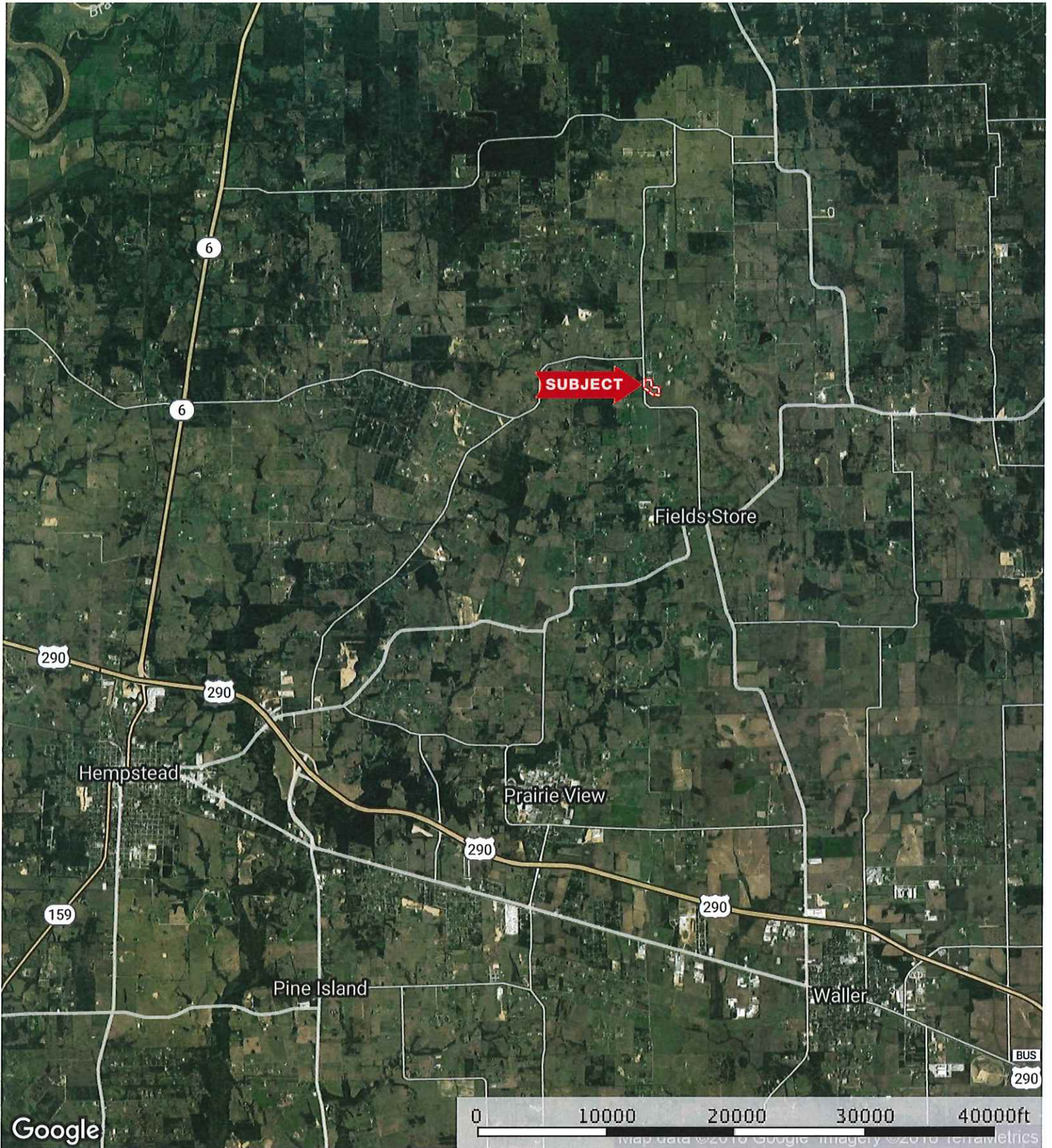
SUBJECT

New Hwy 290


WALLER COUNTY LAND

MOUND CREEK SUBDIVISION

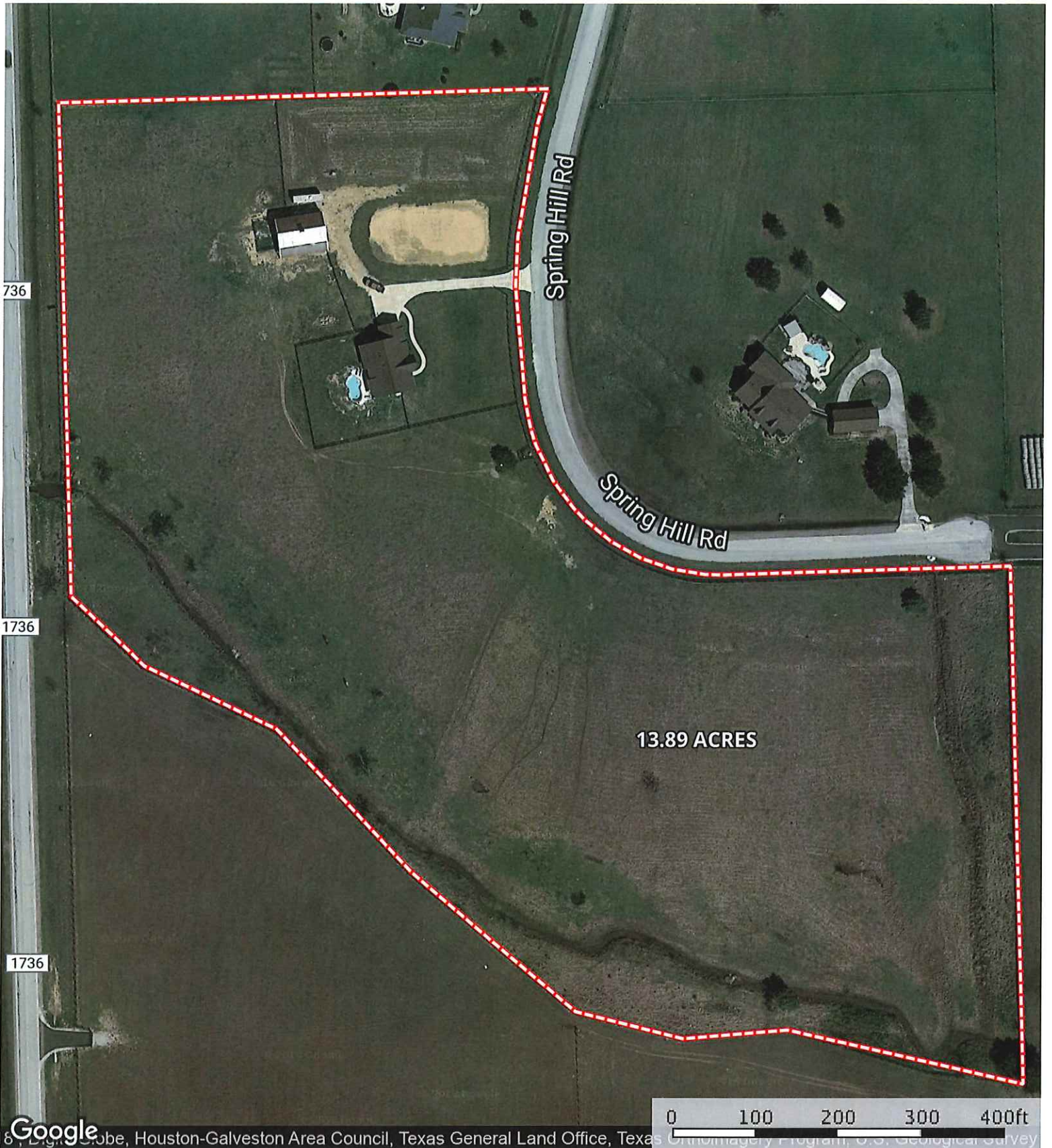
27445 Spring Hill Rd.
Texas, AC +/-




 Boundary

 The information contained herein was obtained from sources deemed to be reliable. MapRight Services makes no warranties or guarantees as to the completeness or accuracy thereof.

27445 Spring Hill Rd.
Texas, AC +/-



 Boundary

 The information contained herein was obtained from sources deemed to be reliable. MapRight Services makes no warranties or guarantees as to the completeness or accuracy thereof.

27445 Spring Hill Rd.
Texas, AC +/-

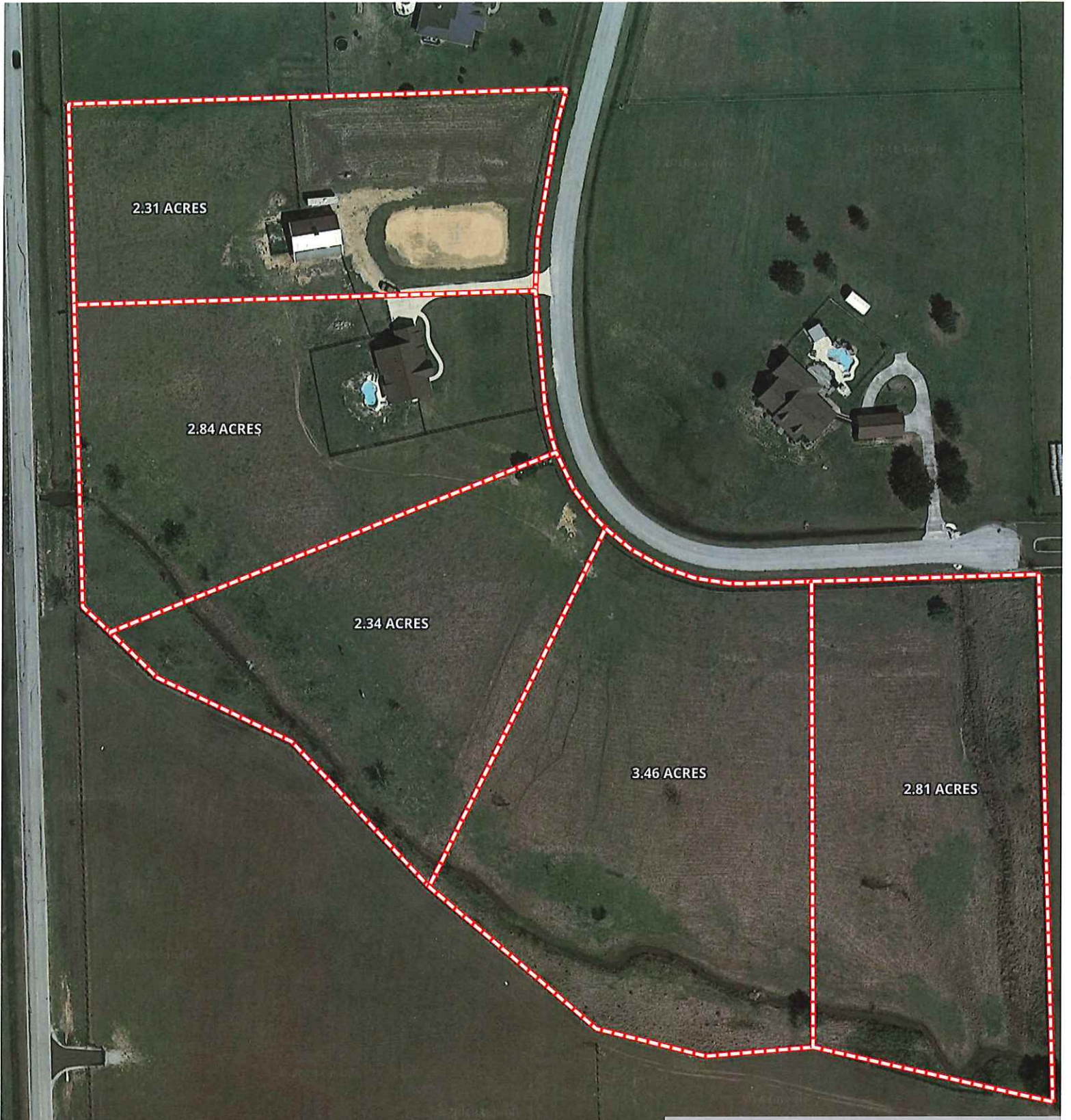


Google, Houston-Galveston Area Council, Texas General Land Office, Texas A&M University, U.S. Geological Survey

- Boundary
- Stream, Intermittent
- River/Creek
- Water Body

The information contained herein was obtained from sources deemed to be reliable. MapRight Services makes no warranties or guarantees as to the completeness or accuracy thereof.


27445 Spring Hill Rd.
Texas, AC +/-



0 100 200 300 400ft

Google, Houston-Galveston Area Council, Texas General Land Office, Texas Aeronautics and Space Administration, U.S. Geological Survey

 Boundary

 The information contained herein was obtained from sources deemed to be reliable. MapRight Services makes no warranties or guarantees as to the completeness or accuracy thereof.