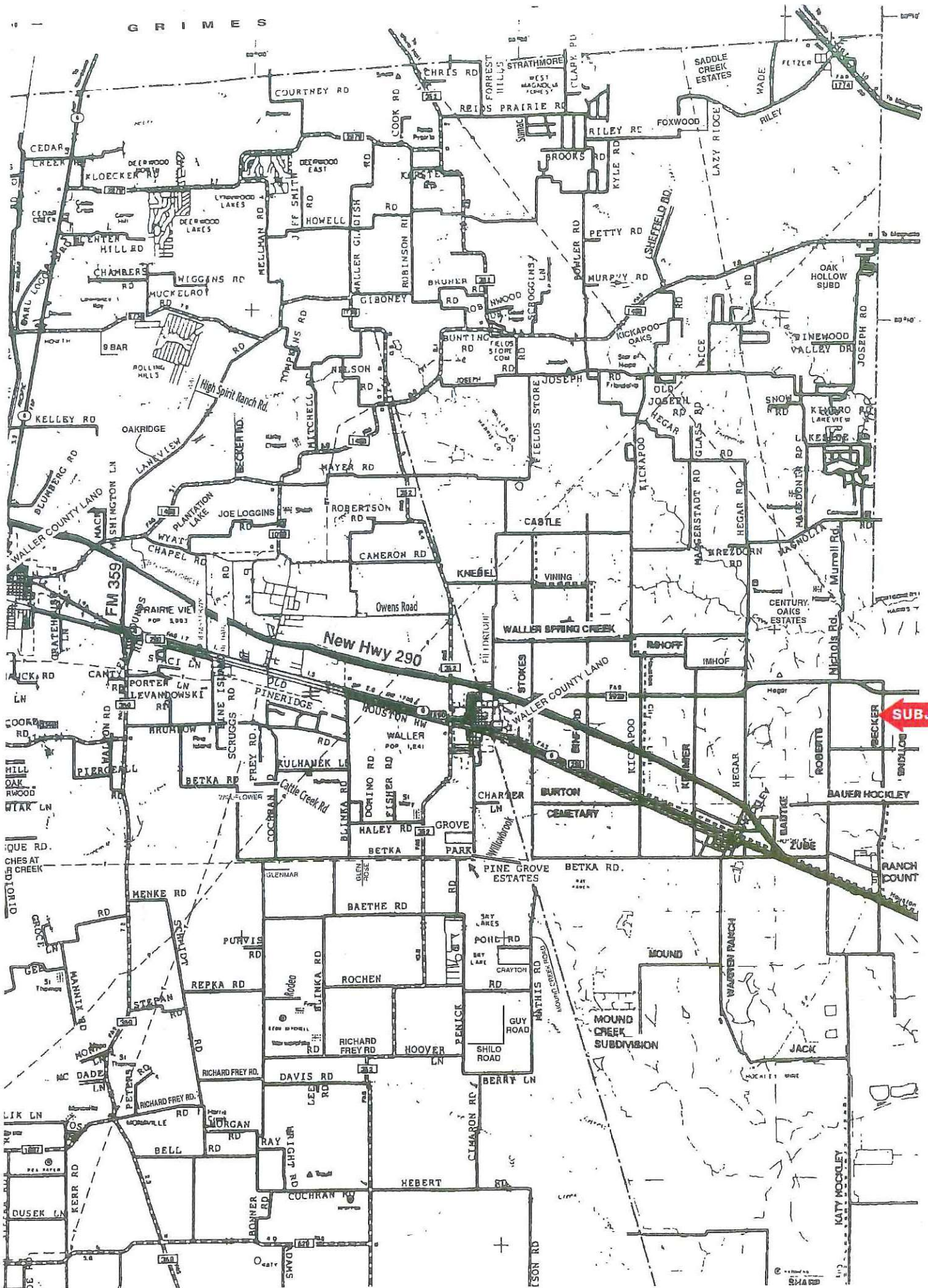


GRIMES



SUBJECT

24.287 AC.
T129332
H.C.C.F.

N 89° 47' 23" E - 2607.95'

N 89° 47' 23" E 1174.06'

N 89° 47' 23" E 746.85'

1433.89'

39.56'

N 89° 47' 23" E 433.21'

N 89° 47' 23" E 20.40'

9.451 AC.

WATER WELL
1-STORY SANSI
RESIDENCE



10.000 AC.

TRACT 4
19.451 AC.

TRACT 1
19.322 AC.

N 89° 44' 13" E - 2174.76'

S 89° 44' 13" W 740.88'

S 89° 44' 13" W 1433.90'

SCALE: 1" = 200'

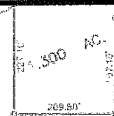
1174.92'

S 89° 44' 13" W

923.30'

S 89° 44' 13" W - 2174.76'

RESIDUE OF
TRACT 2
19.300 AC.



TRACT 5
19.414 AC.

116.214 AC.
CALLED 116.1794
R321752
H.C.C.F.



1059.77'

1,000 AC.

128.147 AC.
S324916
H.C.C.F.

N 00° 09' 22" E 1941.39'

N 00° 09' 22" E 646.33'

1174.78'

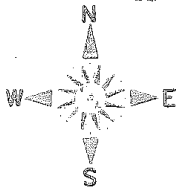
1433.90'

TRACT 6
19.427 AC.

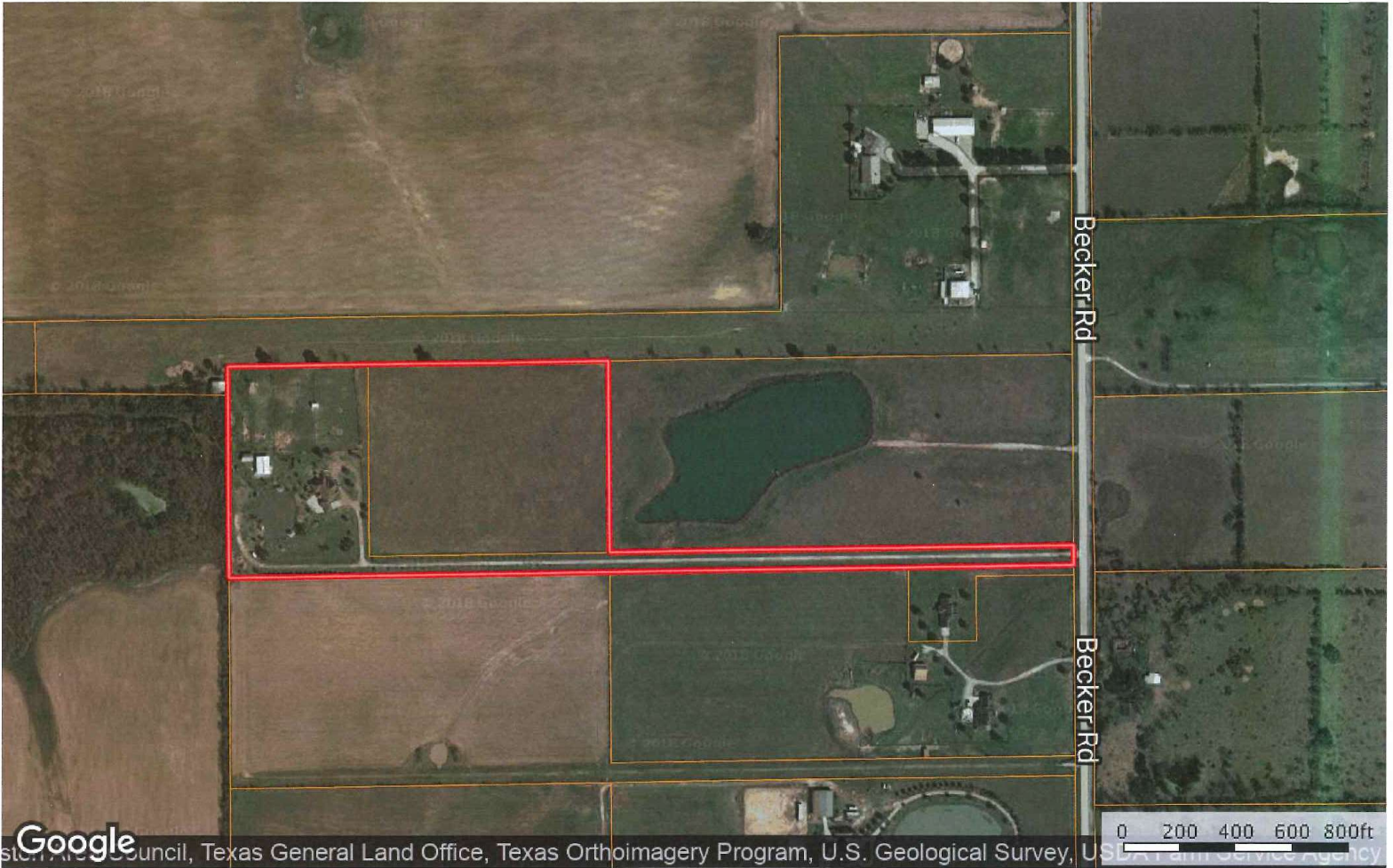
TRACT 3
19.300 AC.

BECKER ROAD
(56 FOOT R.C.W.)
3319.85'

3379.86'



19631 Becker Rd - 19.45 Acres
Texas, AC +/-



Google

© 2018 Google, Inc. All rights reserved. Imagery © 2018 Google, Inc. All rights reserved. Council, Texas General Land Office, Texas Orthoimagery Program, U.S. Geological Survey, USDA Farm Service Agency

Boundary