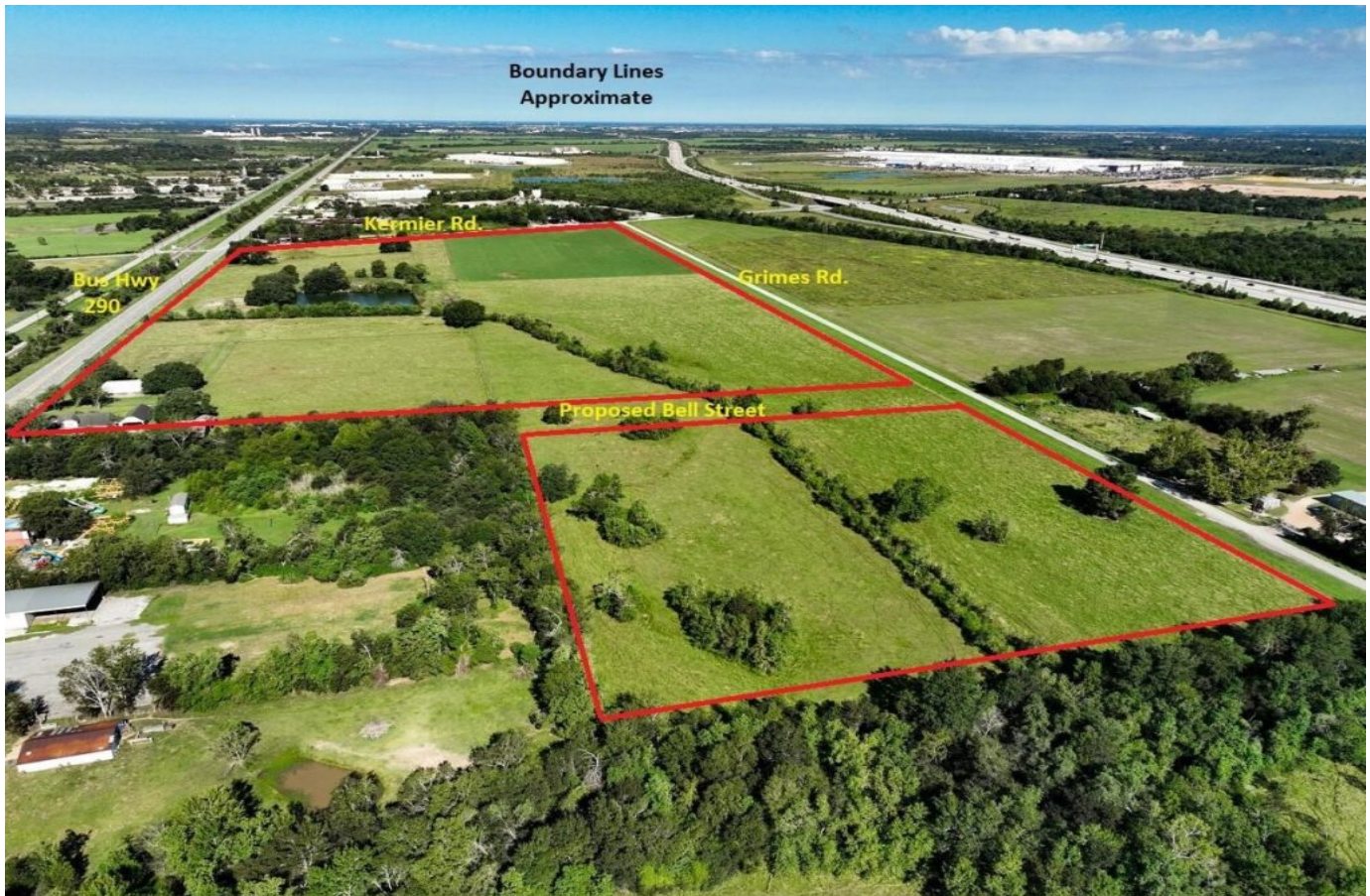


TBD Kermier Rd. - List Price: \$11,256,671

Property Type: Acreage, Commercial



Description:

This unrestricted 64.6 acre property is located in the rapidly growing area along the US Hwy 290 corridor in NW Harris County. Situated just 1,300ft. from US Hwy 290, it offers excellent development potential with paved road frontage on three sides - an approximate total of 6,000ft. frontage. It is just 6 miles from the Grand Pkwy & Cypress offering easy access. This area is rapidly growing with residential development as well as commercial. It is located approximately 2.5 miles from The Grand Prairie, a Master Planned Community that will feature 6,000 homes at build-out & just 1.5 miles from the new Jubilee residential community. Also located less than a mile from the property is the 4.2 million sq.ft. Daikin Technology Park. This great, well-located property provides numerous possibilities, making it a very attractive opportunity.



Acres: 65

List Price: \$11,256,671

City: Hockley

County: Harris

State: TX

Zip: 77447



Debbie Jones

DebbieJones

Image not found or type unknown

djones@WallerCountyLand.com

713-204-7540







[Texas Real Estate Commision Information About Brokerage Service »](#) | [Texas Real Estate Commision Consumer Protection Notice »](#)

Copyright © 2024 Waller County Land Company. All rights reserved.