

WALLER COUNTY LAND COMPANY

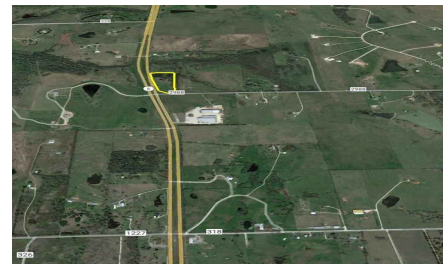
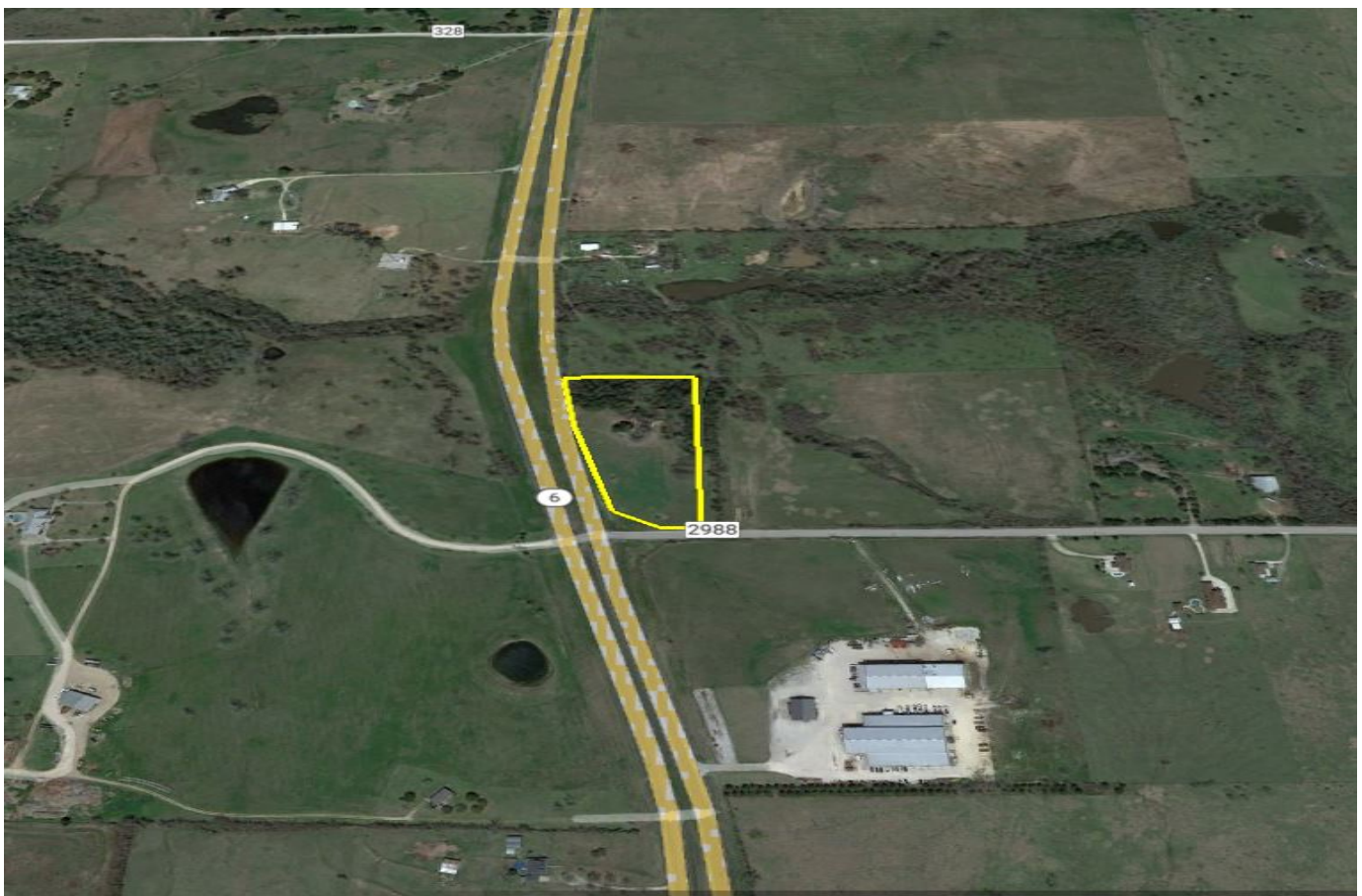
Established 1985

Waller Office: 936.372.9181
Hempstead Office: 979.826.4133

TBD Hwy 6 & FM 2988 - List Price: \$1,061,775

Property Type: Acreage, Commercial

[VIEW ON MAP](#)



Description:

Welcome to a rare & exceptional investment opportunity! This property is well-positioned for those looking to create a dynamic & functional space for their business endeavors. Given its strategic location and size, this property presents a significant investment opportunity with almost 800 ft of road frontage on Hwy 6 & almost 300 ft on FM 2988. With the continued growth & development in the area, now is the time to secure a foothold in this prime commercial real estate market. This expansive 6.5-acre corner property is strategically located in a prime commercial area, offering endless possibilities for prospective buyers. Situated at the intersection of Hwy 6 and FM 2988, this property boasts maximum visibility and accessibility. Contact us today to schedule a viewing. About 15 minutes to Hempstead, 5 minutes to Navasota & 25 minutes to College Station. No restrictions.



Acres: 7

List Price: \$1,061,775

City: Navasota

County: Grimes

State: Texas

Zip: 77868



Ronnie Van Winkle



ronniecvanwinkle@gmail.com

713-254-4704



[Texas Real Estate Commission Information About Brokerage Service »](#) | [Texas Real Estate Commission Consumer Protection Notice »](#)

Copyright © 2024 Waller County Land Company. All rights reserved.