

WALLER COUNTY LAND COMPANY

Established 1985

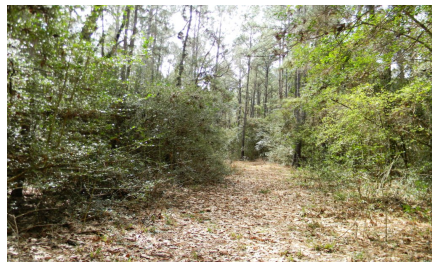
Waller Office: 936.372.9181

Hempstead Office: 979.826.4133

County Rd 302 - List Price: \$376,740

Property Type: Acreage

[VIEW ON MAP](#)



Description:

Unrestricted 32.76 acres of gently rolling terrain with 1300 ft. frontage on County Rd 302. Property is high & dry. No flood plain. It is beautifully wooded with mature oaks & pines & home to an abundance of wildlife. It is truly a nature retreat! There are trails cut all through this property. Perfect for 4-wheelers. It is fenced on 3 sides with a high game fence. This property is approximately 2 miles west of FM 1774 with easy access to the Aggie Expressway (SH 249 expansion) that is currently under construction. This beautiful property offers so many possibilities. A great place to escape the city & spend weekends enjoying nature, build a beautiful secluded country home, commercial or residential development. Timber exemption for low taxes. Come out & take a look.



Acres: 33

List Price: \$376,740

City: Plantersville

County: Grimes

State: Texas

Zip: 77363



Debbie Jones

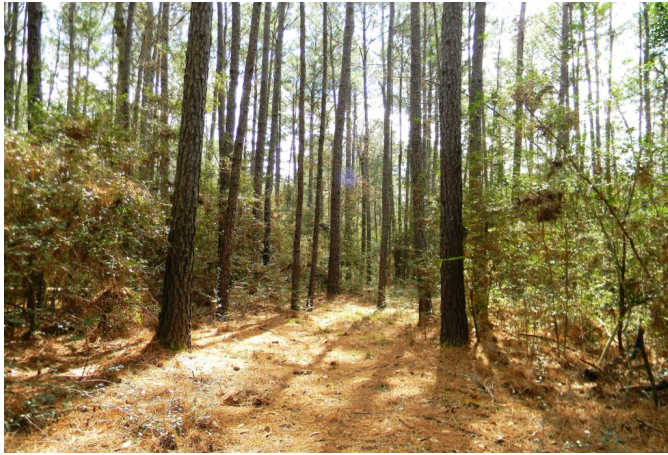


djones@WallerCountyLand.com

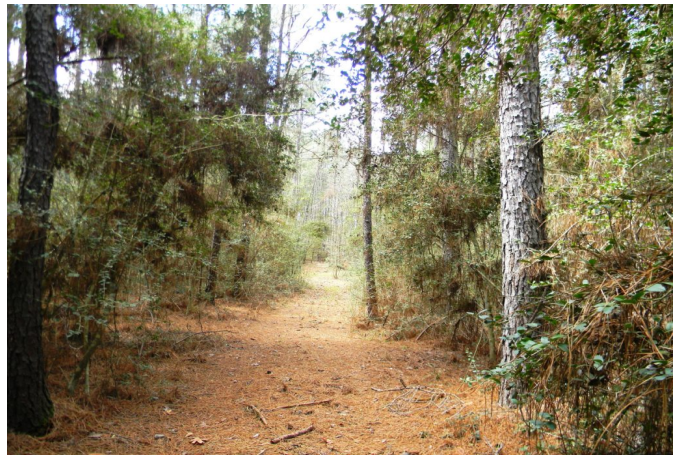
713-204-7540













[Texas Real Estate Commission Information About Brokerage Service »](#) | [Texas Real Estate Commission Consumer Protection Notice »](#)

Copyright © 2020 Waller County Land Company. All rights reserved.