

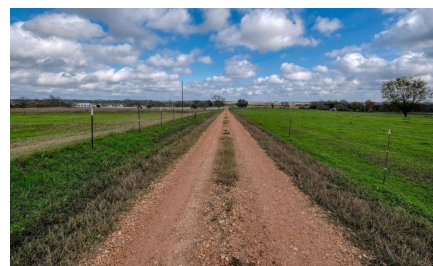
Logo not found or type unknown

Waller Office: 936.372.9181
Hempstead Office: 979.826.4133

6405 Lorena Ln. - List Price: \$3,045,000

Property Type: Acreage, Commercial

[VIEW ON MAP](#)



Description:

Unlock the Gateway to Boundless Potential with This Remarkable Farmland Offering

Step into a world of opportunity with this truly exceptional parcel of farmland, where natural beauty meets limitless possibility. Nestled in a serene and private setting, this expansive tract boasts picture-perfect rolling terrain that provides stunning panoramic views from every vantage point.

The land is as diverse as it is breathtaking featuring three sparkling ponds, multiple barns, and wide-open pastures teeming with native wildlife. Whether you're captivated by its recreational appeal or drawn to its agricultural promise, this property delivers on every front.

Currently AG exempt and free from restrictions, this land offers the flexibility to bring any vision to life. Imagine cultivating a flourishing agricultural business, creating an idyllic country retreat, or building the homestead you've always dreamed of. This is a place where those dreams take root and grow.

With its unique blend of functionality, beauty, and freedom, this tract is more than just land, it's a legacy in the making.



Acres: 87

List Price: \$3,045,000

City: Burton



County: Washington

State: Texas

Zip: 77835



Jayda Broussard

JaydaBroussard

Image not found or type unknown

Jayda.broussard11@gmail.com

979-203-0782









[Texas Real Estate Commision Information About Brokerage Service »](#) | [Texas Real Estate Commision Consumer Protection Notice »](#)

Copyright © 2025 Waller County Land Company. All rights reserved.