

WALLER COUNTY LAND COMPANY

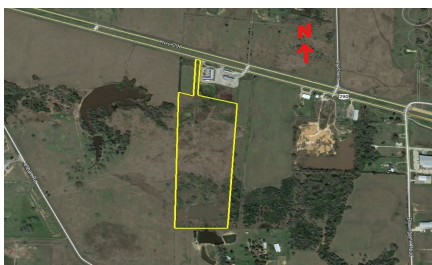
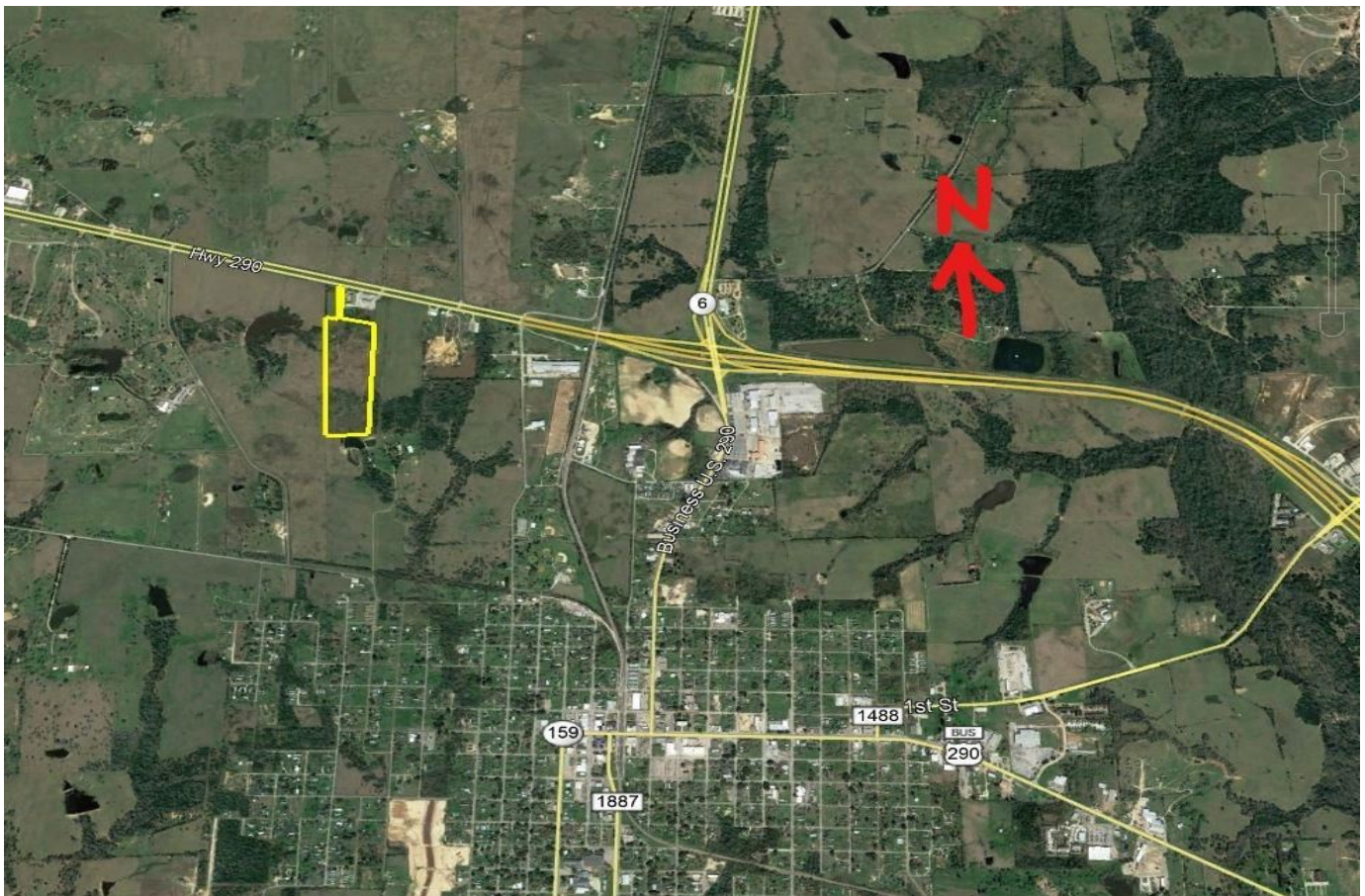
Established 1985

Waller Office: 936.372.9181
Hempstead Office: 979.826.4133

51359 Highway 290 - List Price: \$565,000

Property Type: Acreage, Commercial

[VIEW ON MAP](#)



Description:

This property has great commercial potential with 82 ft road frontage on US 290. City water & gas available! Property includes 3 ponds, water well & septic. Located next to Motel, Gas Station & Convenience Store. Build your business or dream home and bring your horses or cattle. No Flood Plain. No Ag. No Rollback for Commercial use.



Acres: 31

List Price: \$565,000

City: Hempstead

County: Waller

State: Texas

Zip: 77445



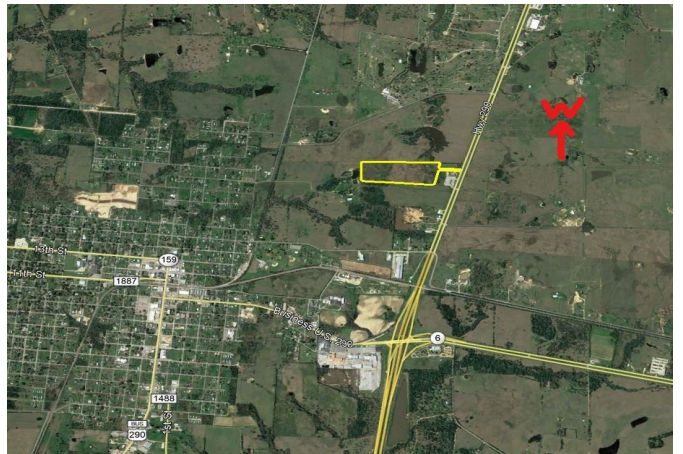
Timothy Phelan



tphelan@WallerCountyLand.com

281-723-9656







[Texas Real Estate Commission Information About Brokerage Service »](#) | [Texas Real Estate Commission Consumer Protection Notice »](#)

Copyright © 2020 Waller County Land Company. All rights reserved.