

# WALLER COUNTY LAND COMPANY

Established 1985

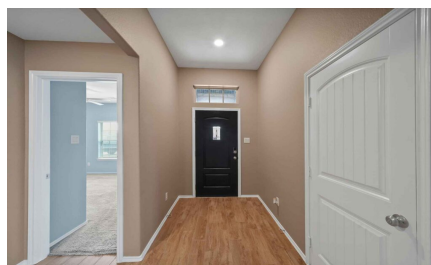
Waller Office: 936.372.9181

Hempstead Office: 979.826.4133

## 31410 Vista Crest Ct. - List Price: \$342,500

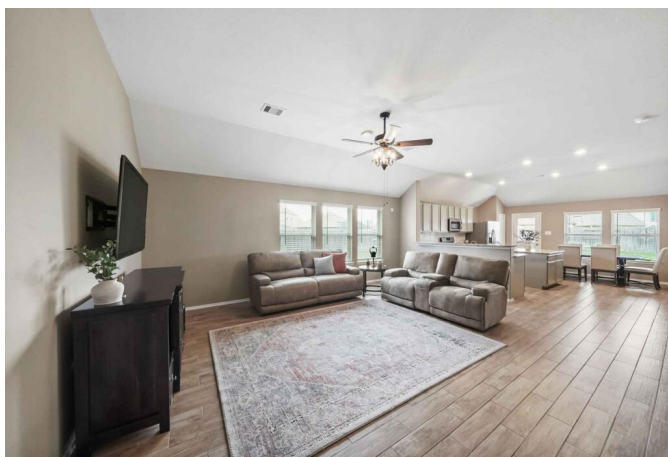
Property Type: Residential

[VIEW ON MAP](#)



## Description:

This Lennar-built home features 4 bedrooms and 2 bathrooms with an inviting open-concept layout. The kitchen offers a substantial island, granite countertops, and a stylish tile backsplash, along with stainless steel appliances including the refrigerator, and washer/dryer. The spacious Owners Suite includes an en-suite bathroom with a garden tub, separate shower, dual sinks, and two walk-in closets, one connecting to the laundry room for convenience. Situated on a corner cul-de-sac lot the property boasts a covered patio and expansive backyard. Upgrades include a Generac Generator, Ring doorbell, gutters, water softener/filtration system, & sprinkler systems. Zoned for the new Loewe Elementary School, the community offers amenities like a clubhouse, pool, pavilion, splash pads, tennis and pickleball courts, walking trails, parks, and playgrounds. Conveniently located minutes from 290, the Grand Parkway, shopping, dining, and hospitals. This home promises satisfaction.



Acres: Call for Info

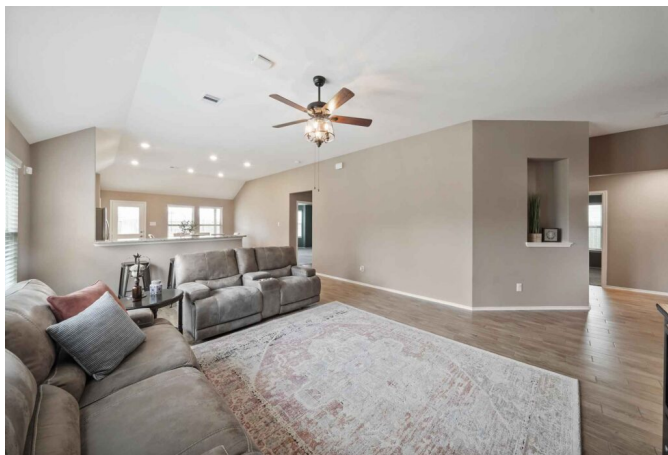
List Price: \$342,500

City: Hockley

County: Harris

State: Texas

Zip: 77447



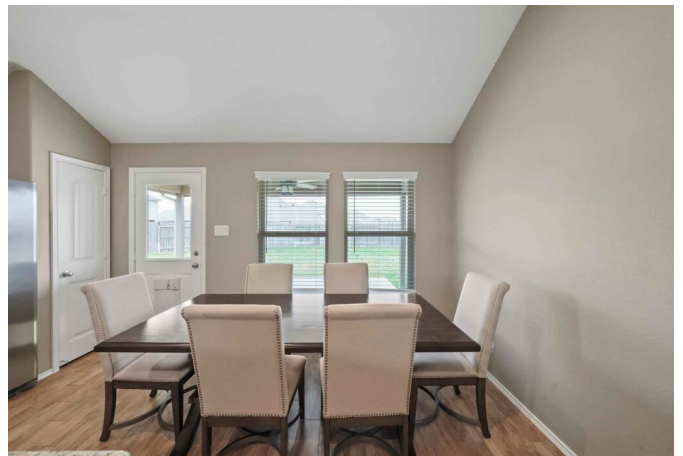
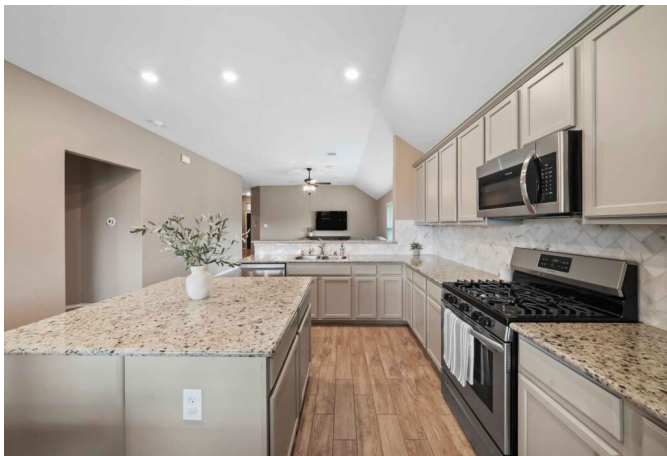
Rendy Elizalde

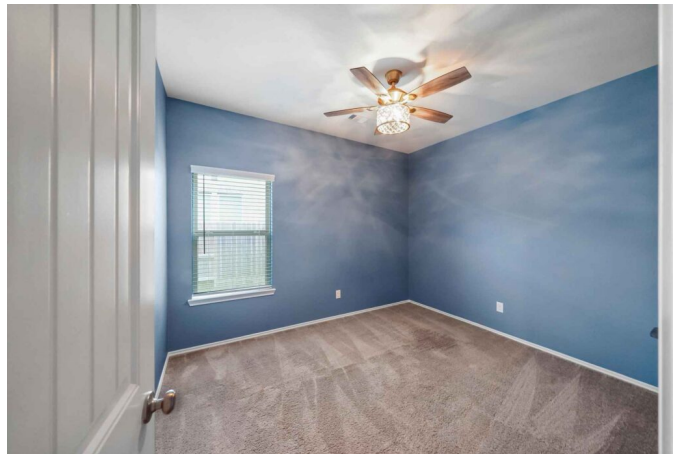


[rendy@WallerCountyLand.com](mailto:rendy@WallerCountyLand.com)

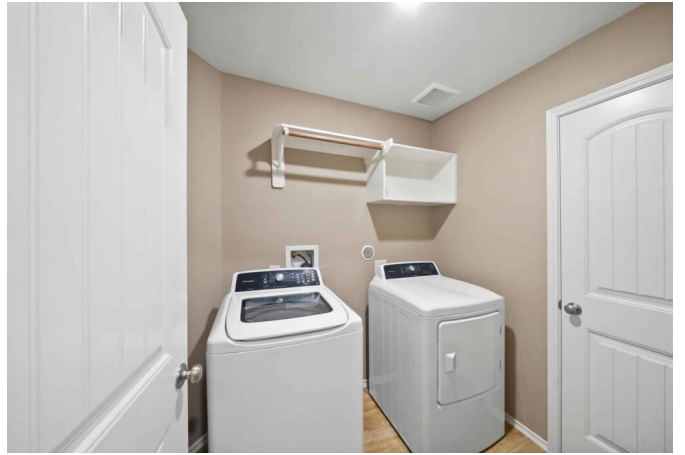
713-806-2830













[Texas Real Estate Commision Information About Brokerage Service »](#) | [Texas Real Estate Commision Consumer Protection Notice »](#)

Copyright © 2024 Waller County Land Company. All rights reserved.