

# WALLER COUNTY LAND COMPANY

Established 1985

Waller Office: 936.372.9181  
Hempstead Office: 979.826.4133

## 30725 FM 2920 - List Price: \$1,211,512

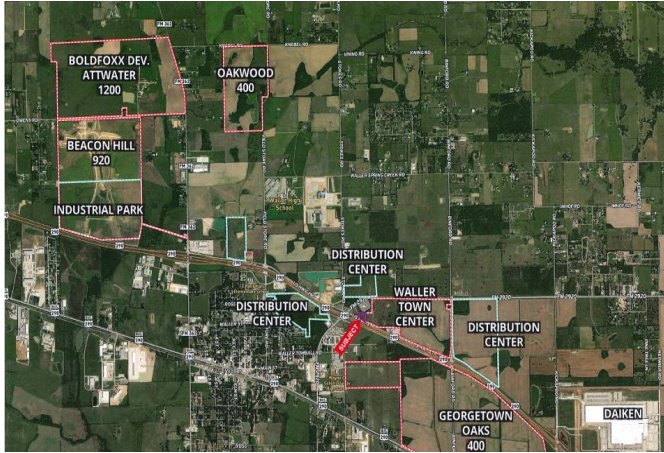
Property Type: Acreage

[VIEW ON MAP](#)



Description:

GREAT LOCATION! This unrestricted 2.225 acres is at the fast growing cross roads of FM 2920 & Hwy 290. City Utilities available. Great visibility from Hwy 290. Easy access from FM 2920 next to Love's.



Acres: 2

List Price: \$1,211,512

City: Waller

County: Harris

State: Texas

Zip: 77484

Timothy Phelan



[tphelan@WallerCountyLand.com](mailto:tphelan@WallerCountyLand.com)

281-723-9656

[Texas Real Estate Commission Information About Brokerage Service »](#) | [Texas Real Estate Commission Consumer Protection Notice »](#)

Copyright © 2024 Waller County Land Company. All rights reserved.