

WALLER COUNTY LAND COMPANY

Established 1985

Waller Office: 936.372.9181
Hempstead Office: 979.826.4133

30670 Joseph Rd. - List Price: \$2,800,000

Property Type: Acreage, Commercial

[VIEW ON MAP](#)



Description:

117 acres of unrestricted land in the heart of Fields Store Community. Beautiful scenic wooded property with large trees and open meadows. The event/retreat center needs TLC but could be restored to its former glory. Property includes 2 ponds, church, 10,000 SF event/retreat center with fireplace, commercial kitchen & 8 bedrooms, brick home, mobile home and several barns. 92 Acres has ag exemption. One pipeline (see attached). Approx. 50 acres at back in flood plain. (see attached). This area is ripe for development. Corner location with over 4,300' of frontage on Joseph & Kickapoo. Approx. 7 miles straight north of Hwy 290 and about 2 miles from FM 1488



Acres: 117

List Price: \$2,800,000

City: Hockley

County: Waller

State: Texas

Zip: 77447

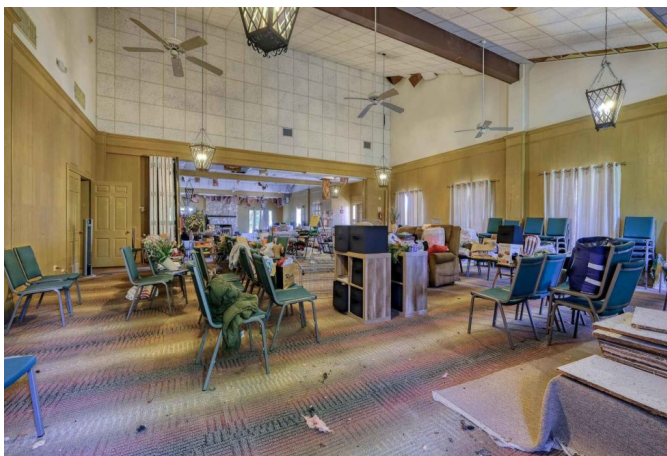


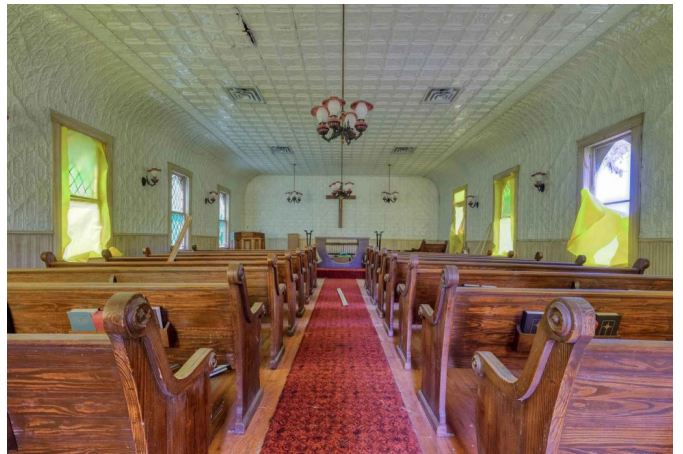
Timothy Phelan



tphelan@WallerCountyLand.com

281-723-9656













[Texas Real Estate Commission Information About Brokerage Service »](#) | [Texas Real Estate Commission Consumer Protection Notice »](#)

Copyright © 2022 Waller County Land Company. All rights reserved.