

WALLER COUNTY LAND COMPANY

Established 1985

Waller Office: 936.372.9181
Hempstead Office: 979.826.4133

30003 Misty Meadow Dr. - List Price: \$320,000

Property Type: Residential

[VIEW ON MAP](#)



Description:

Welcome to your dream home nestled on an unrestricted .96-acre lot, providing the perfect blend of comfort & space. This charming residence boasts 3 bedrooms, 2 bathrooms, and a plethora of desirable features that make it a standout. The home features an open & inviting floor plan, creating a seamless flow between the living spaces. Experience the joy of outdoor living with a delightful wrap-around porch, perfect for morning coffee or evening gatherings. The property offers endless possibilities for gardening or recreational activities. A spacious workshop is ready for all your DIY projects & storage needs. Protect your vehicles from the elements with the convenience of a large carport. Enjoy the luxury of two wells, ensuring a reliable & abundant water supply for your property. Don't miss the chance to own this exceptional property that combines comfort, functionality & freedom to make it your own. Schedule a showing today & experience the unique charm of this remarkable home!



Acres: 1

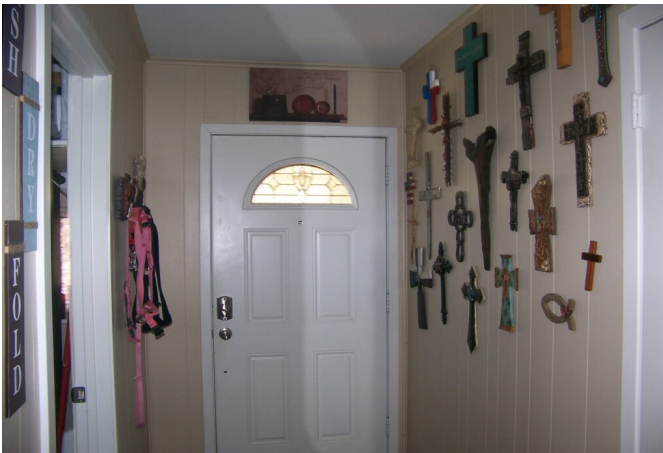
List Price: \$320,000

City: Magnolia

County: Montgomery

State: Texas

Zip: 77355



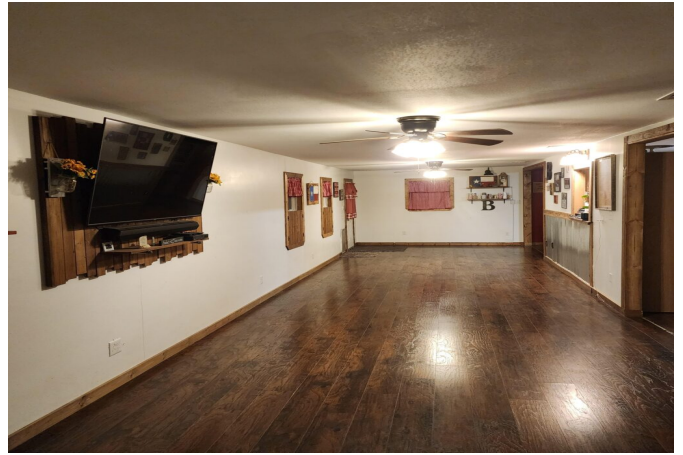
Tanya Coury



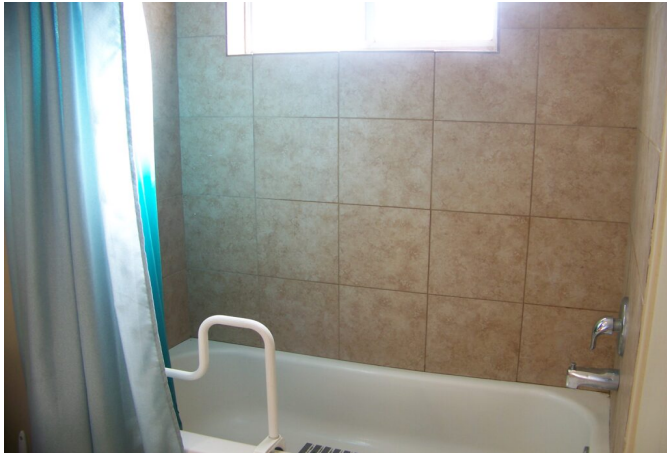
tntbme@gmail.com

281-831-6330









[Texas Real Estate Commission Information About Brokerage Service »](#) | [Texas Real Estate Commission Consumer Protection Notice »](#)

Copyright © 2024 Waller County Land Company. All rights reserved.