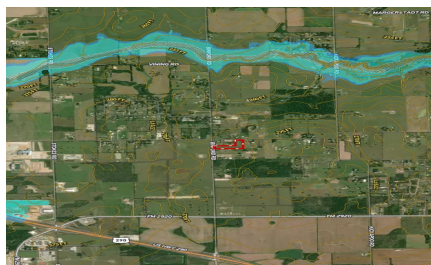
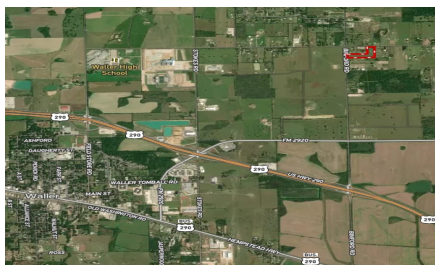
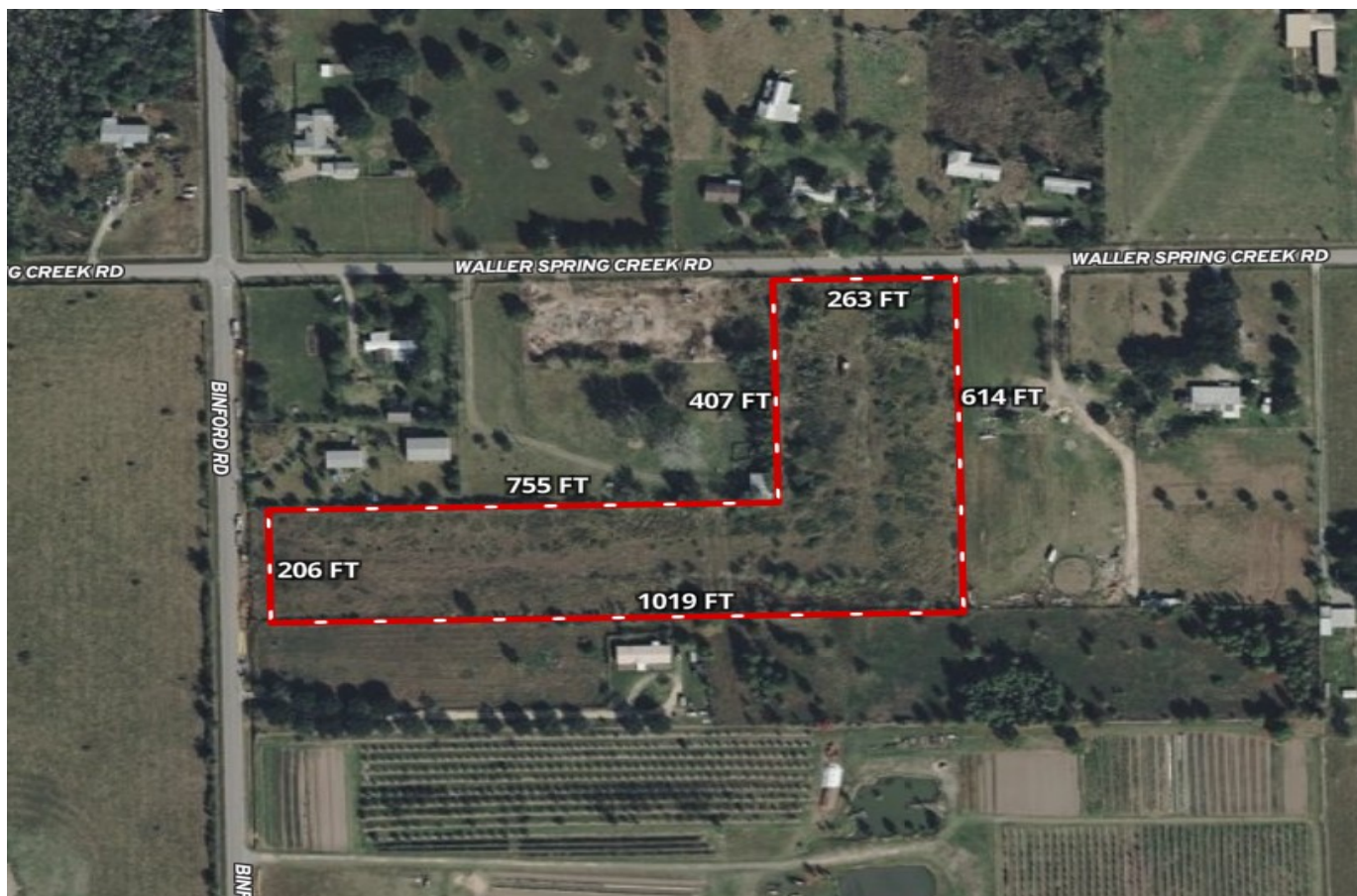


Logo not found or type unknown

Waller Office: 936.372.9181  
Hempstead Office: 979.826.4133

## 29913 Waller Spring Creek Rd. - List Price: \$720,200

Property Type: Acreage, Commercial



## Description:

Unrestricted 7.2 acres with frontage on Binford Rd & Waller Spring Creek Rd. just 1 mile north of FM 2920 and 2 miles north of Hwy 290. High traffic roads as development is quickly increasing in the Waller area. A 40' culvert/entrance on Binford is in place. A smaller culvert/entrance is on Waller Spring Creek frontage. 3-phase electric is readily available. See attachments/documents for dimensions. Check it out!



Acres: 7

List Price: \$720,200

City: Waller

County: Waller

State: TX

Zip: 74484



Timothy Phelan

TimothyPhelan

Image not found or type unknown

[tphelan@WallerCountyLand.com](mailto:tphelan@WallerCountyLand.com)

281-723-9656





[Texas Real Estate Commission Information About Brokerage Service »](#) | [Texas Real Estate Commission Consumer Protection Notice »](#)

Copyright © 2025 Waller County Land Company. All rights reserved.