

# WALLER COUNTY LAND COMPANY

Established 1985

Waller Office: 936.372.9181

Hempstead Office: 979.826.4133

## 24594 FM 362 - List Price: \$948,563

Property Type: Acreage, Commercial

[VIEW ON MAP](#)





## Description:

Well located 24.638 acres (more or less) on FM 362 just 5 minutes North of Hwy 290. Unrestricted, no flood plain, 2 ponds (Large & small), approximately 70% fenced however seller may complete balance of perimeter fencing once survey is completed. Seller is getting new survey. Property includes large lighted pipe arena in NW corner. Property has ag exemption as it is currently an improved hay field. Several cross fences. Ponds could easily be enlarged to make one very large pond. Located in rapidly growing area. Proposed FM 1488 realignment & widening map shows it going through the SE corner of subject property...See picture & documents/attachments. Approximately front 1/3 of property is in Waller County & back portion is in Harris County.



Acres: 25

List Price: \$948,563

City: Waller

County: Waller

State: Texas

Zip: 77484



Timothy Phelan



[tphelan@WallerCountyLand.com](mailto:tphelan@WallerCountyLand.com)

281-723-9656

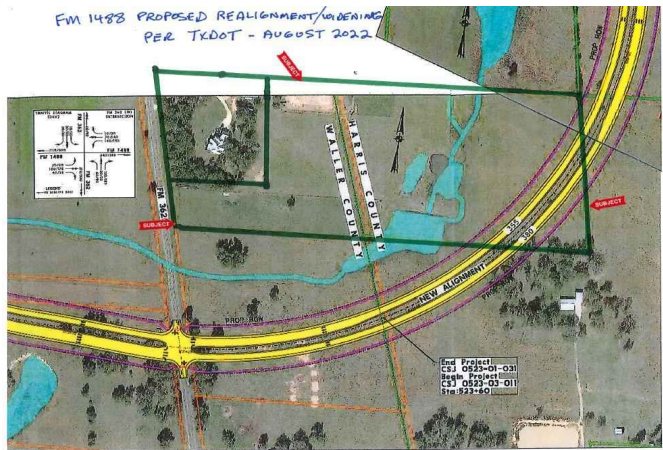












[Texas Real Estate Commission Information About Brokerage Service »](#) | [Texas Real Estate Commission Consumer Protection Notice »](#)

Copyright © 2023 Waller County Land Company. All rights reserved.