

# WALLER COUNTY LAND COMPANY

Established 1985

Waller Office: 936.372.9181

Hempstead Office: 979.826.4133

## 24456 Dublin St. - List Price: \$129,500

Property Type: Residential

[VIEW ON MAP](#)





## Description:

Great corner location with mature trees and circle driveway. This 4-2-2 home sits on just over half an acre, needs a little TLC but has lots of potential. Home has large family room, open kitchen, living room and a wood burning fireplace. Garage has a breezeway for covered access to home. Lots of room to roam on this property and great for gatherings.



Acres: 1

List Price: \$129,500

City: Hempstead

County: Waller

State: Texas

Zip: 77445



Rendy Elizalde



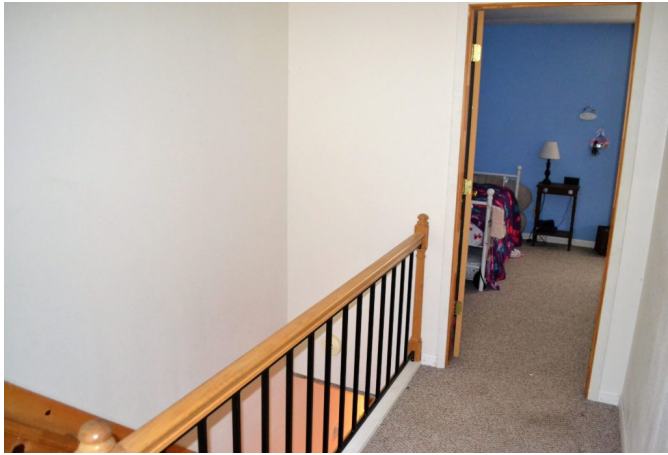
[rendy@WallerCountyLand.com](mailto:rendy@WallerCountyLand.com)

713-806-2830











[Texas Real Estate Commission Information About Brokerage Service »](#) | [Texas Real Estate Commission Consumer Protection Notice »](#)

Copyright © 2020 Waller County Land Company. All rights reserved.