

WALLER COUNTY LAND COMPANY

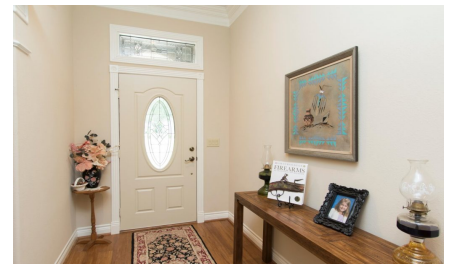
Established 1985

Waller Office: 936.372.9181
Hempstead Office: 979.826.4133

24406 Lori Ln - List Price: \$549,900

Property Type: Residential

[VIEW ON MAP](#)



Description:

Gorgeous builders home on unrestricted 1.3 acre corner lot with extensive paving...over 100 yards of concrete poured. This well-appointed 4-2.5 custom home features an impressive 37ft long foyer, spacious formal living & dining room area & a huge family room. The kitchen is truly amazing with a massive island, granite countertops, lots of beautiful cabinets & is open to the family room. The spacious master retreat will accommodate oversized furniture with room left over & features a fabulous master bathroom with a soaking tub, Roman style shower, double vanity with granite & large closet. The attention to detail stands out in this home with arched openings, rounded corners, beautiful crown molding & woodwork, warm tones, tile & wood floors. It is energy efficient with lots of ceiling fans, high efficiency zoned a/c, insulated windows & doors and spray foam insulation. There is also a full home water filtration system & whole house back-up generator. Enjoy outdoor living on the covered back porch. The grounds are tastefully landscaped & complete with sprinkler system. There is an attached 2-car garage plus a separate 1800 sq.ft. workshop/RV garage with a 30X34 shop area with 10 ft. ceiling & a 50X16 area with 16 ft. ceiling for your RV. Plenty of room for your automobiles, equipment & toys! All improvements are fully bricked on all sides for low maintenance. This property is complete with private water well & septic system. Enjoy peaceful country living with easy access to State Hwy 249, FM 2920 & the Grand Pkwy .



Acres: 1

List Price: \$549,900

City: Magnolia

County: Montgomery

State: Texas

Zip: 77355



Debbie Jones

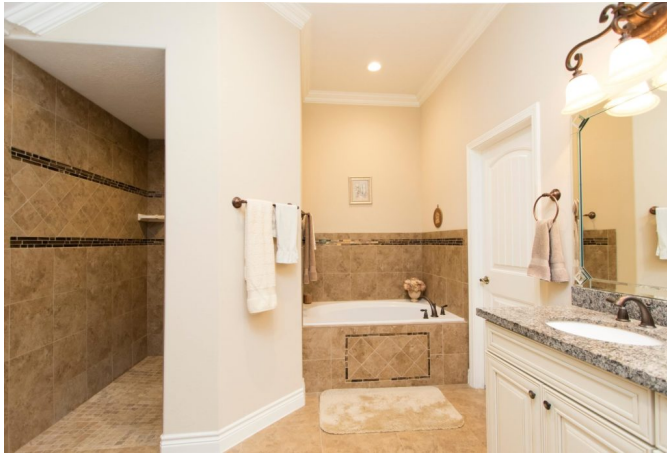


djones@WallerCountyLand.com

713-204-7540











[Texas Real Estate Commission Information About Brokerage Service »](#) | [Texas Real Estate Commission Consumer Protection Notice »](#)

Copyright © 2020 Waller County Land Company. All rights reserved.