

WALLER COUNTY LAND COMPANY

Established 1985

Waller Office: 936.372.9181

Hempstead Office: 979.826.4133

23727 Legacy Ln. - List Price: \$415,000

Property Type: Residential

[VIEW ON MAP](#)



Description:

Custom 4/2.5/2 home on 3 acres is located in the quiet & serene Legacy Estates. This small acreage subdivision is conveniently located just off Hwy 6 with easy access to 290 . Home is light and bright with a lovely view from the back patio. You will find an open concept with lots of natural light, wood burning fireplace, island kitchen, split floor plan and formal dining/home office.



Acres: 3

List Price: \$415,000

City: Hempstead

County: Waller

State: Texas

Zip: 77445



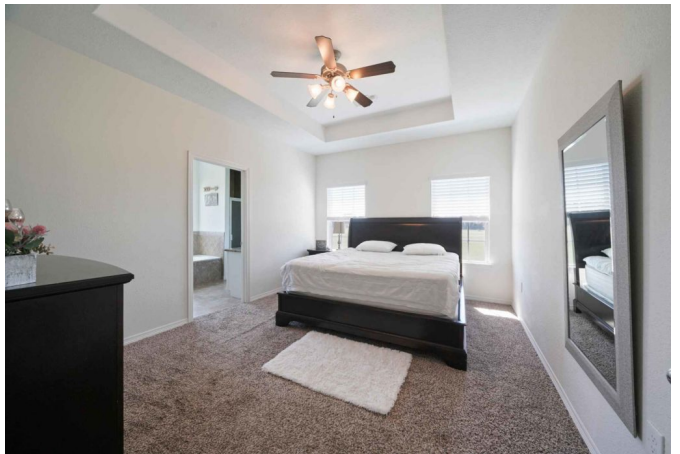
Rendy Elizalde



rendy@WallerCountyLand.com

713-806-2830











[Texas Real Estate Commission Information About Brokerage Service »](#) | [Texas Real Estate Commission Consumer Protection Notice »](#)

Copyright © 2021 Waller County Land Company. All rights reserved.