

WALLER COUNTY LAND COMPANY

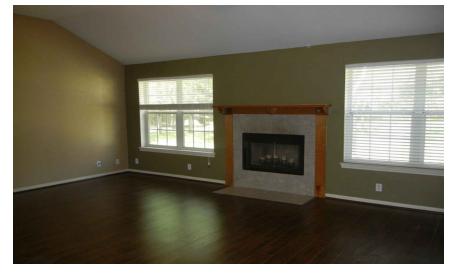
Established 1985

Waller Office: 936.372.9181
Hempstead Office: 979.826.4133

23170 Baneberry - List Price: \$375,000

Property Type: Residential

[VIEW ON MAP](#)



Description:

3/2/2 1,922 Sq. Ft. on 1.138 acres. Country living can be found in this highly sought-after subdivision. No MUD! Lots of wildlife to watch from the patio! Large trees and a few storage sheds for parking your lawn equipment or small recreational vehicles. Easy access to the growing Magnolia area and also to Tomball! The kitchen features an island and a corner sink. Breakfast area, dining room and the den features a vaulted ceiling, hardwood floors and a propane fireplace. The refrigerator, washer and dryer all stay! The primary bath is light and bright with separate walk-in closets and double sinks. Partially fenced. Magnolia school district. Come on out and take a look at this one!



Acres: 1

List Price: \$375,000

City: Magnolia

County: Montgomery

State: Texas

Zip: 77355



Melinda DeGroot



mdegroot@WallerCountyLand.com

713-818-1759





[Texas Real Estate Commission Information About Brokerage Service »](#) | [Texas Real Estate Commission Consumer Protection Notice »](#)

Copyright © 2023 Waller County Land Company. All rights reserved.