

WALLER COUNTY LAND COMPANY

Established 1985

Waller Office: 936.372.9181
Hempstead Office: 979.826.4133

23011 Cardinal Dr. - List Price: \$330,000

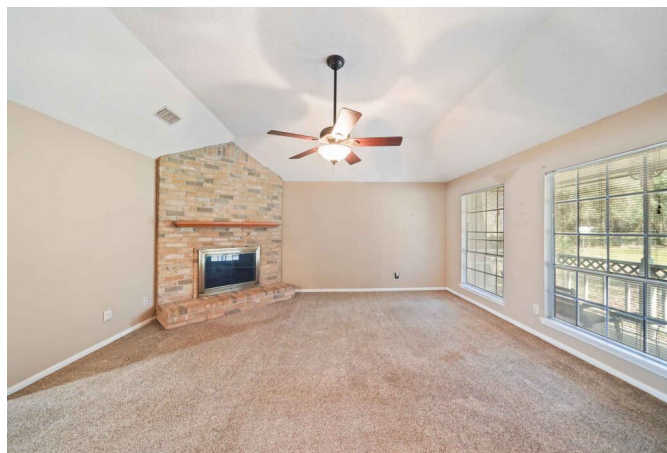
Property Type: Residential

[VIEW ON MAP](#)



Description:

Discover the charm of this lovely 4-bed 3-bath home on over three-quarters of an acre lot in Holly Springs. It comes with a carport and workshop for added convenience. With two primary suites, each with a walk-in closet, the home offers a comfy and adaptable living space. The eat-in kitchen featuring a breakfast bar and granite countertops, flows into a cozy living area with a wood-burning fireplace. Outside, the large fenced yard is perfect for various outdoor activities, entertainment, and relaxation under the shade of mature trees. Positioned conveniently between Tomball, Cypress, and Waller, this home combines comfort with easy access to nearby areas. Located in Waller ISD.



Acres: 1

List Price: \$330,000

City: Hockley

County: Harris

State: Texas

Zip: 77447

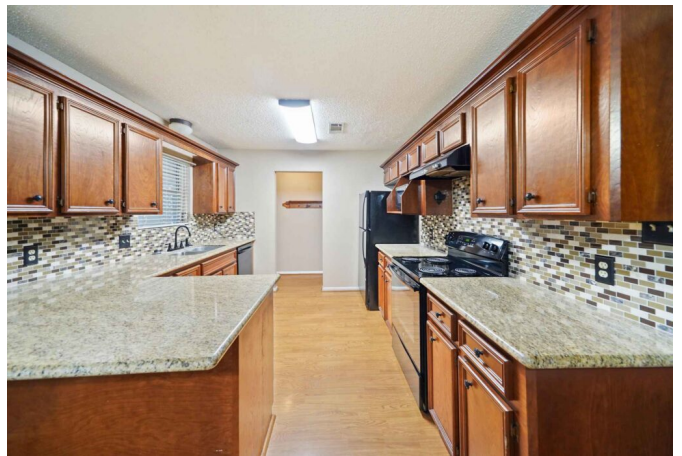
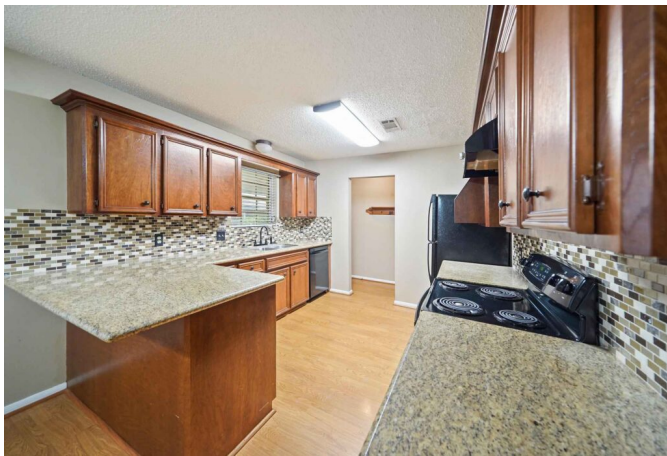


Rendy Elizalde



rendy@WallerCountyLand.com

713-806-2830









[Texas Real Estate Commission Information About Brokerage Service »](#) | [Texas Real Estate Commission Consumer Protection Notice »](#)

Copyright © 2024 Waller County Land Company. All rights reserved.