

WALLER COUNTY LAND COMPANY

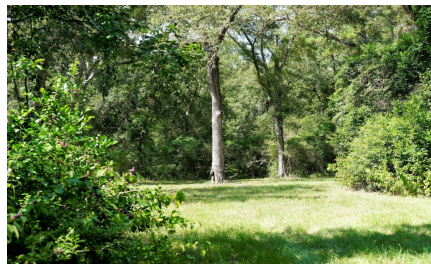
Established 1985

Waller Office: 936.372.9181
Hempstead Office: 979.826.4133

22509 Murrell Rd. - List Price: \$489,986

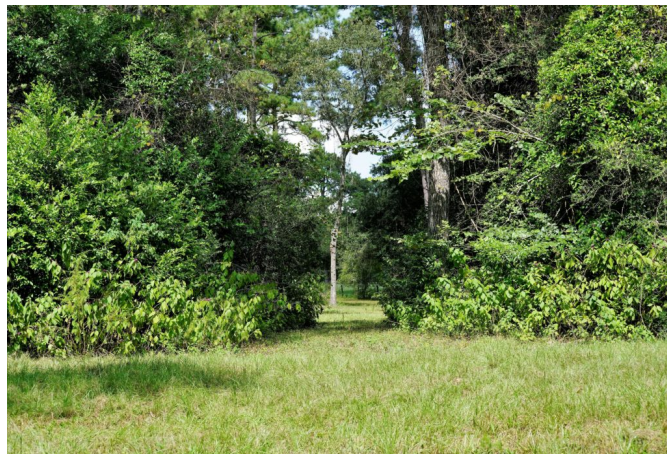
Property Type: Acreage

[VIEW ON MAP](#)



Description:

Premium one-of-a-kind scenic 7-acre tract, secluded and selectively cleared with utilities close by, in Waller County less than a mile from the Harris County line. Lot surrounded on all sides by large custom homes on acreage and manicured equestrian estates. Reasonable protective residential building restrictions with no MUD or subdivision taxes. Deeded easement access, huge hardwoods and scenic views, transacted by a wet-weather creek with scenic ravines and bridge. High land with excellent drainage, seclusion, wildlife, and great neighbors. Enormous potential for your dream home.



Acres: 7

List Price: \$489,986

City: Hockley

County: Waller

State: Texas

Zip: 77447



Timothy Phelan



tphelan@WallerCountyLand.com

281-723-9656









[Texas Real Estate Commission Information About Brokerage Service »](#) | [Texas Real Estate Commission Consumer Protection Notice »](#)

Copyright © 2020 Waller County Land Company. All rights reserved.