

Logo not found or type unknown

Waller Office: 936.372.9181
Hempstead Office: 979.826.4133

22474 Kmiec Rd. - List Price: \$4,250,000

Property Type: Residential

[VIEW ON MAP](#)



Description:

Welcome to elegant country living! Experience ultimate privacy on a quiet road just 20 minutes from Brenham & 30 minutes from Cypress. This stunning estate was completely remodeled from slab & studs in 2021 to its present meticulous condition. Plaster walls and a striking tongue-in-groove faux paint wood cathedral ceiling, engineered wood flooring, Granite & Quartzite countertops, huge closets, 13x13 heavily reinforced safe room, energy-efficient features including insulated picture windows, foam-insulated attic, surround sound, hot water on demand & more. The outdoor space is equally impressive, featuring a huge back porch overlooking a heated saltwater pool with a waterfall, a slide & in-floor cleaning system, a luxurious cabana that creates a true resort-style experience, and a 3-car garage with an upstairs 2-bedroom apartment. The property includes a 5-stall barn (with room to add stalls) complete with turnouts & additional storage. Enjoy serene ponds and manicured pastures ideal for horses, livestock, or simply enjoying the tranquil, park-like setting. Stay connected and secure with Starlink internet, a 48KW Generac generator, an automatic gated entry, and a full security camera system. This one-of-a-kind property blends rustic charm with modern luxury, perfect for those seeking peace, privacy, and elegance in the countryside.



Acres: 31

List Price: \$4,250,000

City: Hempstead



County: Waller

State: Texas

Zip: 77445



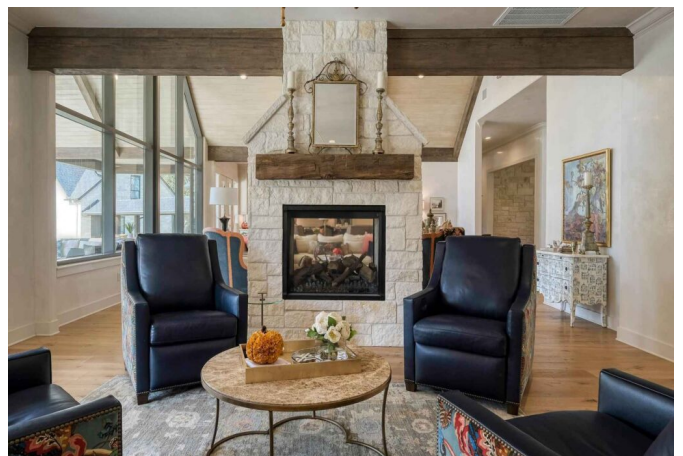
Timothy Phelan

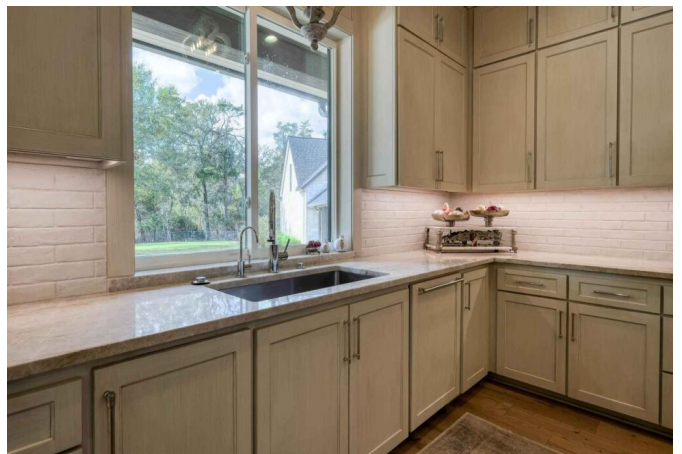
TimothyPhelan

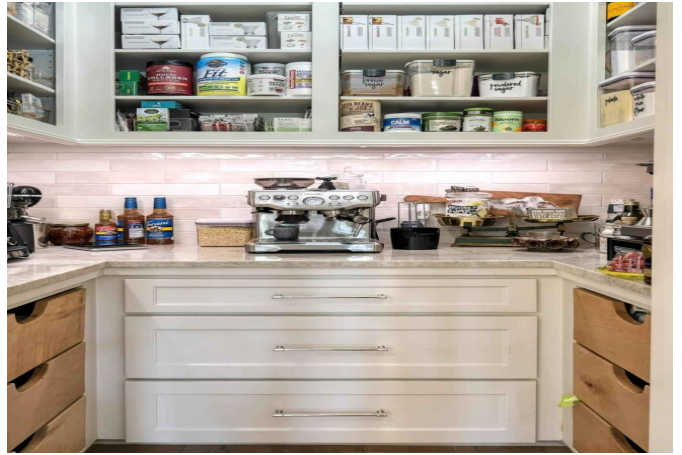
Image not found or type unknown

tphelan@WallerCountyLand.com

281-723-9656

















[Texas Real Estate Commission Information About Brokerage Service »](#) | [Texas Real Estate Commission Consumer Protection Notice »](#)

Copyright © 2025 Waller County Land Company. All rights reserved.