

WALLER COUNTY LAND COMPANY

Established 1985

Waller Office: 936.372.9181

Hempstead Office: 979.826.4133

21935 Cardinal - List Price: \$215,000

Property Type: Residential

[VIEW ON MAP](#)



Description:

Charming all brick home nestled under mature trees on a half acre lot in Holly Springs. Pride in ownership shines through in this immaculate well maintained home. This open floor plan features a spacious updated kitchen with lots of cabinet & counter space, large living room with high ceiling, neutral warm tones throughout, updated vanities in master bath & secondary bath plus brand new carpet. There are ceiling fans throughout & a digital thermostat. The property features a 2 car detached garage, a separate workshop, garden shed, raised garden beds & extra parking for RV or boat. The fenced-in back yard offers lots of room to roam & play. The roof is approximately 9 years old, the a/c system (14 Seer) was replaced in 2012 & water heater in 2014. This wonderful established neighborhood is well located with easy access to Tomball, the Grand Pkwy & just down the road from the new Daikin Goodman facility in Hockley. Don't miss this one.



Acres: Call for Info

List Price: \$215,000

City: Hockley



County: Harris

State: Texas

Zip: 77447



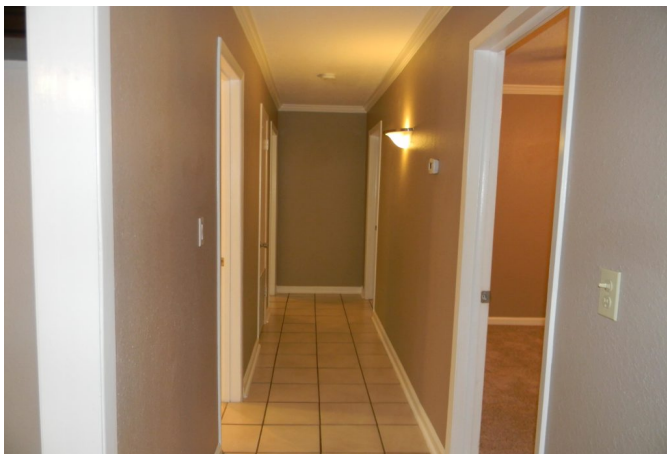
Debbie Jones



djones@WallerCountyLand.com

713-204-7540









[Texas Real Estate Commission Information About Brokerage Service »](#) | [Texas Real Estate Commission Consumer Protection Notice »](#)

Copyright © 2020 Waller County Land Company. All rights reserved.