

WALLER COUNTY LAND COMPANY

Established 1985

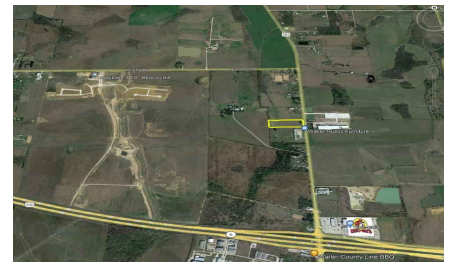
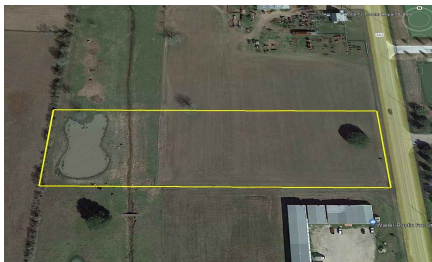
Waller Office: 936.372.9181

Hempstead Office: 979.826.4133

21233 FM 362 - List Price: \$823,284

Property Type: Acreage, Commercial

[VIEW ON MAP](#)



Description:

6 Acres in fast growing area with easy access to US 290. 314 ft of road frontage. Just around the corner from Beacon Hill & Wolff Companies new developments. In the path of growth. Less than 0.7 miles from Hwy 290. Utilities nearby. Ag Exempt.



Acres: 6

List Price: \$823,284

City: Waller



County: Waller

State: Texas

Zip: 77484



Timothy Phelan



tphelan@WallerCountyLand.com

281-723-9656



[Texas Real Estate Commission Information About Brokerage Service »](#) | [Texas Real Estate Commission Consumer Protection Notice »](#)

Copyright © 2023 Waller County Land Company. All rights reserved.