

WALLER COUNTY LAND COMPANY

Established 1985

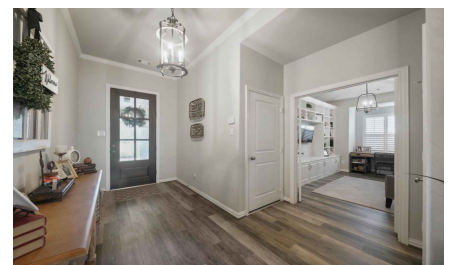
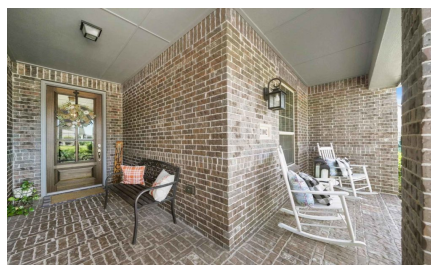
Waller Office: 936.372.9181

Hempstead Office: 979.826.4133

21002 Coastal Springs Dr. - List Price: \$489,900

Property Type: Residential

[VIEW ON MAP](#)



Description:

Stunning 4 bedroom custom home ideally situated on a quiet cul-de-sac in desirable Laurel Park North. Floor plan includes a study, open concept living & dining room. The island kitchen features a large island, walk-in pantry & breakfast area all accessible from family room. Dual sinks, garden tub & separate shower can be found in the spacious primary en-suite. Play games or watch movies with family & friends in the game room. Garage includes epoxy floors. Walking Paths, Clubhouse, Pool, Dog Park & Putting Green are located in the neighborhood. You are also in close proximity to Grand Parkway, Grand Parkway Marketplace, lots of restaurants and shopping! You don't want to miss out on this house, call for a showing today!



Acres: Call for Info

List Price: \$489,900

City: Spring

County: Harris

State: Texas

Zip: 77379

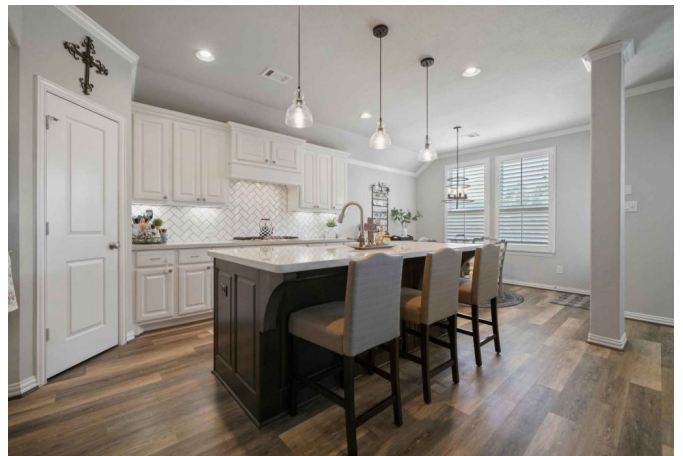


Rendy Elizalde



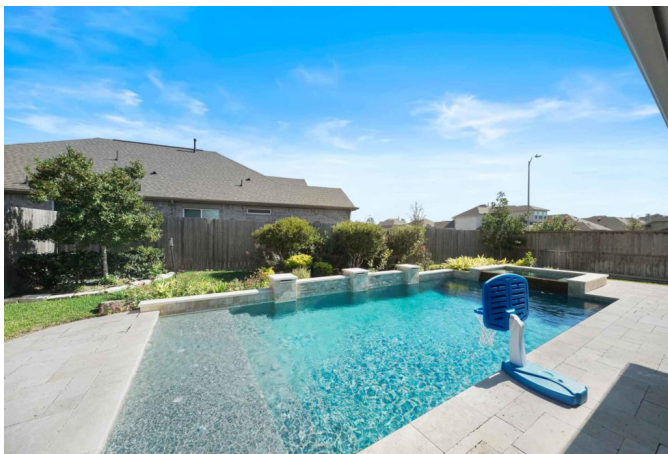
rendy@WallerCountyLand.com

713-806-2830











[Texas Real Estate Commision Information About Brokerage Service »](#) | [Texas Real Estate Commision Consumer Protection Notice »](#)

Copyright © 2022 Waller County Land Company. All rights reserved.