

WALLER COUNTY LAND COMPANY

Established 1985

Waller Office: 936.372.9181

Hempstead Office: 979.826.4133

20612 Lenen Dr. - List Price: \$234,500

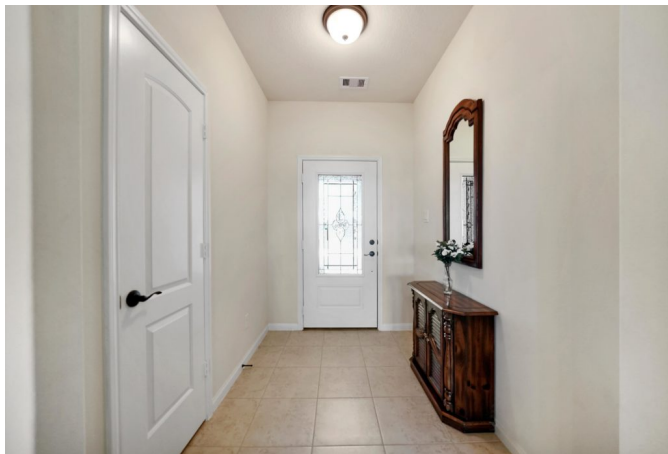
Property Type: Residential

[VIEW ON MAP](#)



Description:

Over-sized lot in the quiet community of Bauer Landing with charming 4 bedroom home & huge, fenced back yard. Close proximity to community park (which includes benches, bathrooms, 2 pavilions & picnic tables), mailboxes, sidewalk for walking & riding bikes with very little thru-traffic on Lenen. Home has a neutral pallet throughout with split floor plan for privacy and recessed lighting. Kitchen has Granite counter tops, stainless appliances, breakfast bar and walk-in pantry. Master bath features tub & separate shower, his & her sinks and his & her walk-in closets. Everything you need in a home and it's just waiting for your family.



Acres: Call for Info

List Price: \$234,500

City: Hockley

County: Harris

State: Texas

Zip: 77447



Rendy Elizalde



rendy@WallerCountyLand.com

713-806-2830









[Texas Real Estate Commission Information About Brokerage Service »](#) | [Texas Real Estate Commission Consumer Protection Notice »](#)

Copyright © 2020 Waller County Land Company. All rights reserved.