

# WALLER COUNTY LAND COMPANY

Established 1985

Waller Office: 936.372.9181

Hempstead Office: 979.826.4133

## 20329 Roberts Cemetery Rd - List Price: \$2,500,000

Property Type: Commercial

[VIEW ON MAP](#)



**Description:**

This immaculate 15.294 acre property is located just a quarter mile north of FM 2920 in a rapidly developing area. Best suited for commercial with residence or commercial with office space. Great location with existing income & plenty of room to expand or add. Secure automatic gated entry, small office building, 2,000 sq.ft. insulated warehouse with bath, 1,500 sq.ft. insulated warehouse, lots of stabilized surface area with commercial lighting throughout, 315X 50 covered RV/boat storage as well as large uncovered storage area & a very nice 2300 sq.ft. manufactured home (great office space) with 36K back-up generator. Lots of property, lots of potential.enlarge existing facility, add warehouse/office space, relocate your business or combination business/residential. So many opportunities! No flood plain, cleared, unrestricted, quick & easy access to the Grand Pkwy & US Hwy 290. See the attached Amenities List for more detailed information. Seller may consider a long-term Lease.



**Acres:** 15

**List Price:** \$2,500,000

**City:** Hockley

**County:** Harris

**State:** Texas

**Zip:** 77447

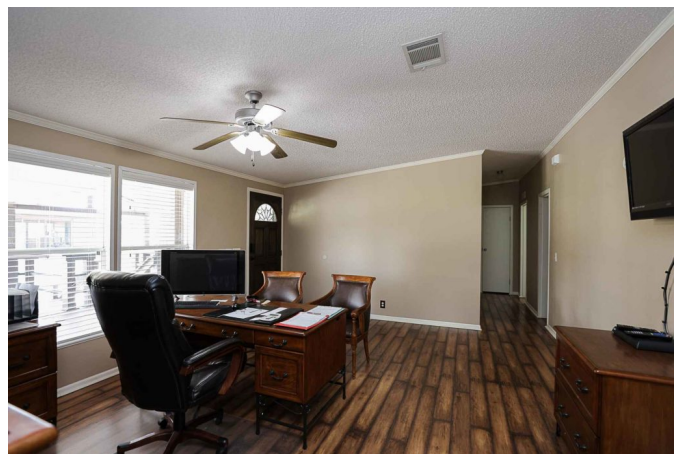


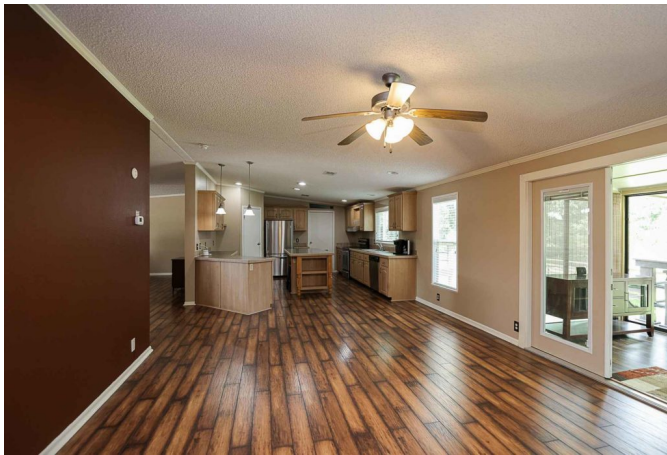
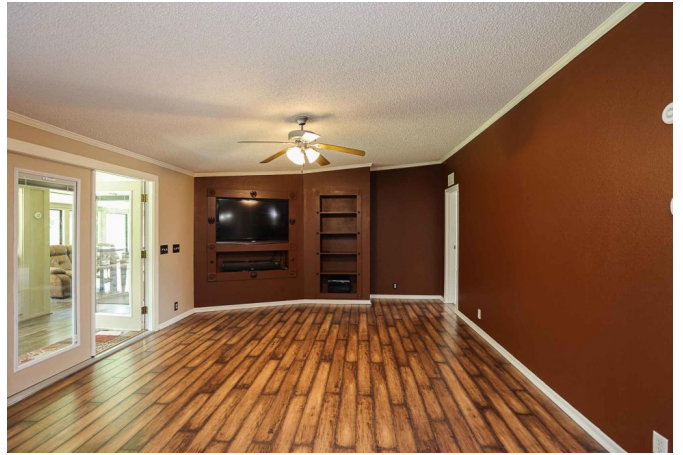
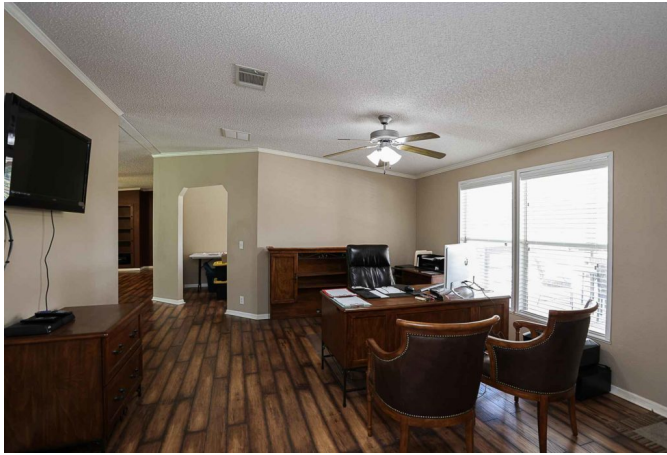
**Debbie Jones**

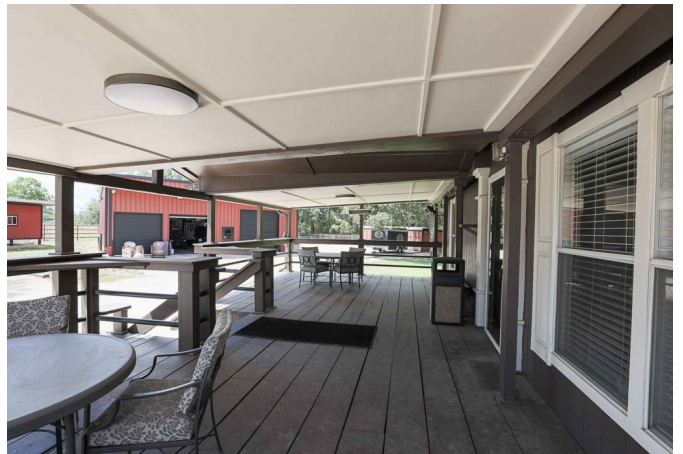


[djones@WallerCountyLand.com](mailto:djones@WallerCountyLand.com)

713-204-7540











[Texas Real Estate Commission Information About Brokerage Service »](#) | [Texas Real Estate Commission Consumer Protection Notice »](#)

Copyright © 2023 Waller County Land Company. All rights reserved.