

WALLER COUNTY LAND COMPANY

Established 1985

Waller Office: 936.372.9181

Hempstead Office: 979.826.4133

19631-A Becker Rd - List Price: \$1,150,000

Property Type: Residential

[VIEW ON MAP](#)



Description:

Secluded 19.5 acre property in Hockley near FM 2920 with a stunning Hill Country style home. A tranquil setting boasting an impressive home with a beautiful Austin stone elevation with full stone on all sides. The home sits over 2,100 ft. back from the road. The double door entry opens to a spacious open floor plan bathed with natural light. You'll be met with a spectacular view of the the pond. Graced with arched openings, crown molding & custom cabinetry, this home is loaded with too many features to list (see "Features List" under Docs). Meticulously designed to enjoy the outdoors, it has approx. 7,000 sq. ft. of flagstone patios & porches plus a 1/4 acre stocked pond with well placed seating areas, water features & a pond-side deck. It is fenced & cross-fenced with 4 fenced paddocks, a 10 acre hay pasture & a 40X40 steel building w/concrete floor, 3 stalls & a flagstone patio overlooking the pond. The majority of the property sits about 1400 ft. back from the road with a 60ft. wide driveway fronting Becker Rd. Located just south of FM 2920 with easy access to US Hwy 290 & The Grand Pkwy.



Acres: 19

List Price: \$1,150,000

City: Hockley



County: Harris

State: Texas

Zip: 77447



Debbie Jones

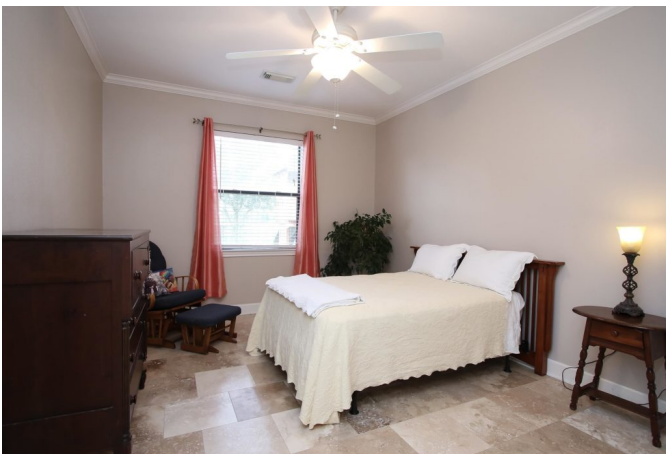


djones@WallerCountyLand.com

713-204-7540

















[Texas Real Estate Commission Information About Brokerage Service »](#) | [Texas Real Estate Commission Consumer Protection Notice »](#)

Copyright © 2020 Waller County Land Company. All rights reserved.