

WALLER COUNTY LAND COMPANY

Established 1985

Waller Office: 936.372.9181
Hempstead Office: 979.826.4133

16522 1/2 Park Row - Lease Price: Call For Price

Property Type: Leases – Residential and Commercial

[VIEW ON MAP](#)



Description:

2250 SF of commercial warehouse space with 12x14 office and restroom now for lease. Convenient access to I-10. Suitable for warehouse or light industrial. 3 bays and 2 man doors. Security cameras installed throughout the premises and gated access for added security. Office space has window unit for AC, and the warehouse does not have HVAC. No auto repair shops allowed. Call us today!



Acres: Call for Info

Lease Price: Call For Price

City: Houston

County: Harris

State: TX

Zip: 77084



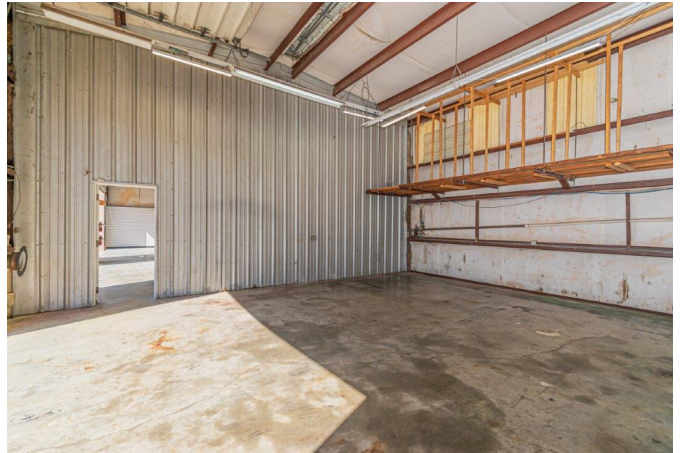
Cindy Kosik

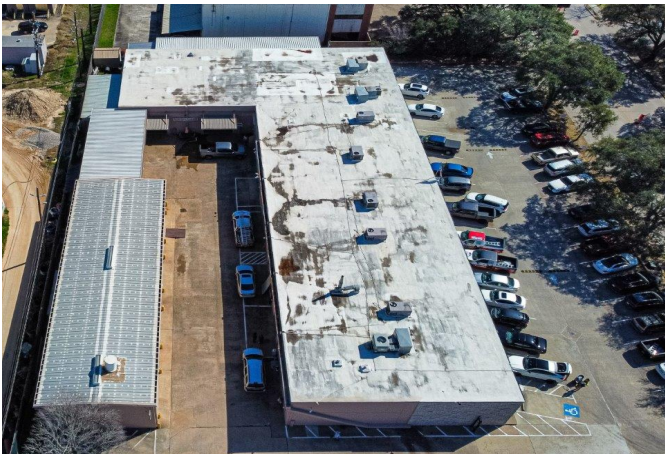


kosikcindy@gmail.com

281-725-7564







[Texas Real Estate Commission Information About Brokerage Service »](#) | [Texas Real Estate Commission Consumer Protection Notice »](#)

Copyright © 2024 Waller County Land Company. All rights reserved.