

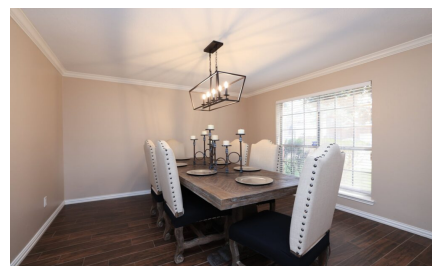
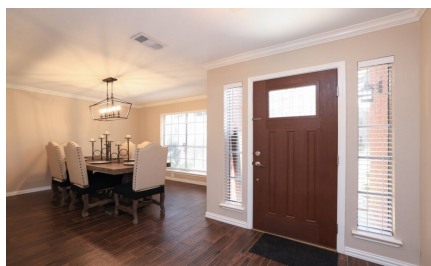
Logo not found or type unknown

Waller Office: 936.372.9181
Hempstead Office: 979.826.4133

16418 Wellers Way - List Price: \$325,000

Property Type: Residential

[VIEW ON MAP](#)



Description:

Welcome to your dream home in the highly desirable community of Copper Creek, Wheatstone Village! This 4-bedroom, 2.5-bath residence combines comfort, convenience, & community living at its finest. Ideally situated just steps from the neighborhood pool, playground, scenic walking trails, & tennis courts, this home offers a lifestyle of leisure & connection. Inside, you'll find a well-appointed kitchen complete with double ovens, an electric range, and ample counter space—perfect for home chefs & entertainers alike. The kitchen flows effortlessly into a light-filled dining area, ideal for hosting family dinners or casual brunches. Relax in the warm & inviting living room, centered around a cozy chimney-style fireplace, creating the perfect ambiance for gatherings or quiet evenings in. Upstairs, the generously sized primary suite features an en-suite bathroom with double vanities, a separate walk-in shower & a spacious walk-in closet—your private retreat after a long day. Zoned to top-rated schools and offering quick access to both Highway 6 and 290, commuting & daily errands are a breeze.



Acres: Call for Info

List Price: \$325,000

City: Houston

County: Harris

State: TX

Zip: 77095



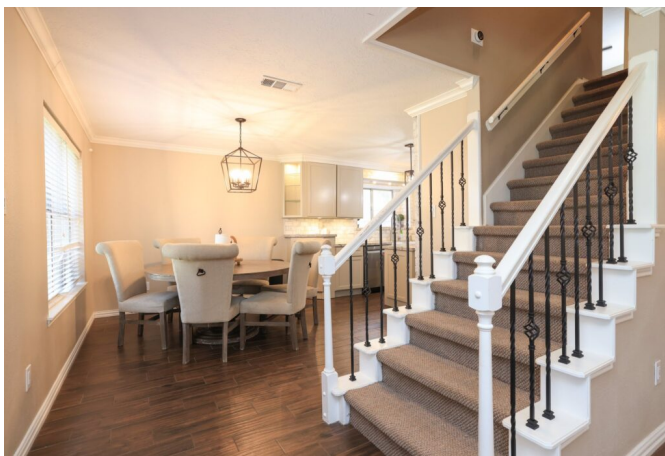
Joel Lopez

JoelLopez

Image not found or type unknown

realestatexpert@gmail.com

281-381-0707









[Texas Real Estate Commission Information About Brokerage Service »](#) | [Texas Real Estate Commission Consumer Protection Notice »](#)

Copyright © 2025 Waller County Land Company. All rights reserved.