

WALLER COUNTY LAND COMPANY

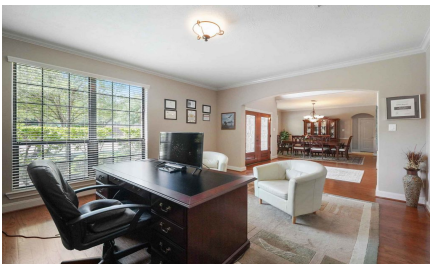
Established 1985

Waller Office: 936.372.9181
Hempstead Office: 979.826.4133

13606 Via Ponte Vecchio - List Price: \$448,500

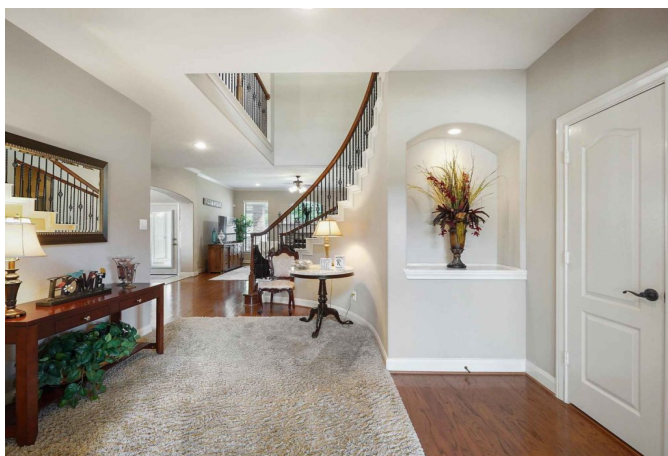
Property Type: Residential

[VIEW ON MAP](#)



Description:

This warm, welcoming, meticulously cared for home in the desirable neighborhood of Tuscany is just waiting for you! It is surrounded by beautiful landscaping and mature trees. This gorgeous 2-story home offers 4 bedrooms and 3 1/2 baths. The den features a stone front gas log fireplace and is open to the breakfast room and kitchen making it perfect for entertaining. The kitchen is well appointed with an island, breakfast bar, stainless steel Bosch appliances and a generous amount of storage. The Media & the Game room are upstairs along with 3 bedrooms and two baths, one of which is an en-suite. The covered patio and outdoor kitchen are ideal for entertaining! Oversized garage and located on a cul-de-sac street. This home will not disappoint, make your appointment today.



Acres: Call for Info

List Price: \$448,500

City: Cypress

County: Harris

State: Texas

Zip: 77429



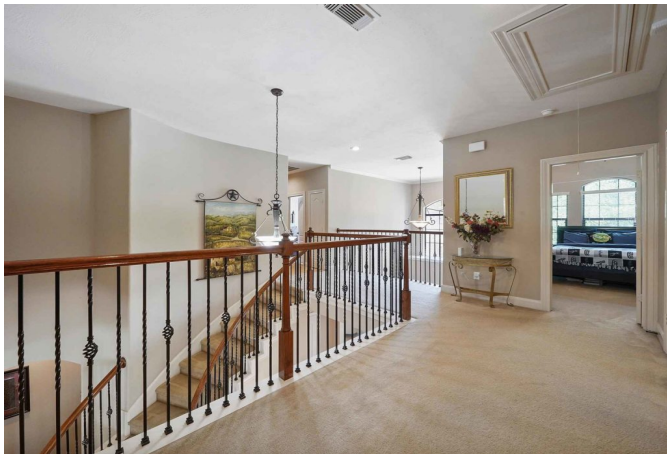
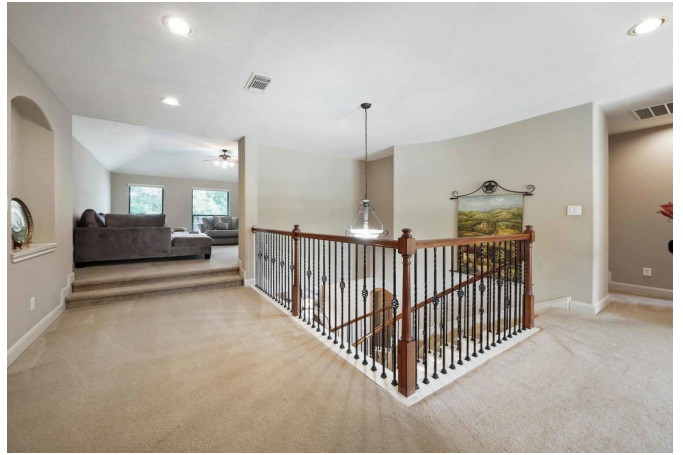
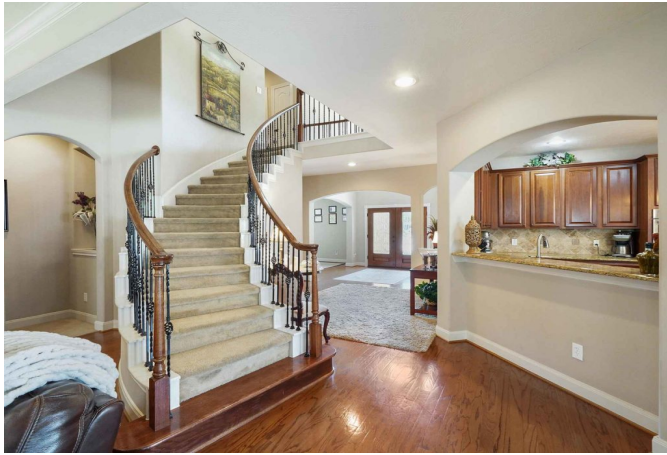
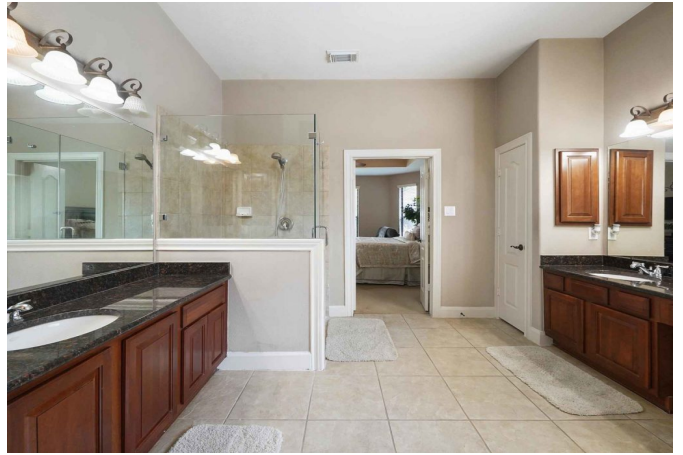
Rendy Elizalde

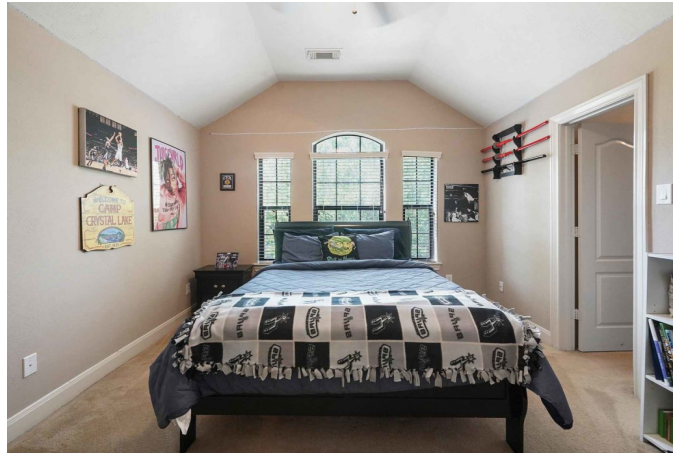


rendy@WallerCountyLand.com

713-806-2830









[Texas Real Estate Commission Information About Brokerage Service »](#) | [Texas Real Estate Commission Consumer Protection Notice »](#)

Copyright © 2021 Waller County Land Company. All rights reserved.