

WALLER COUNTY LAND COMPANY

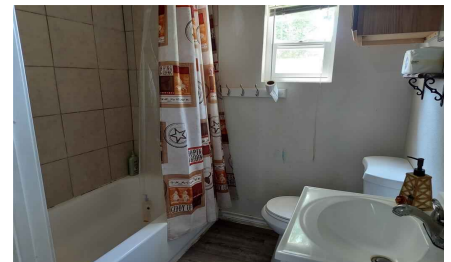
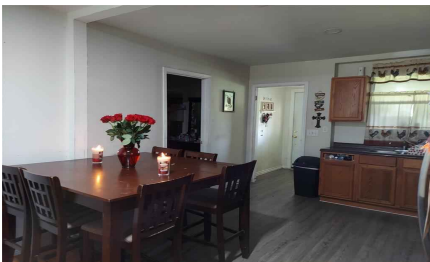
Established 1985

Waller Office: 936.372.9181
Hempstead Office: 979.826.4133

134 Clark St. - List Price: \$250,000

Property Type: Residential

[VIEW ON MAP](#)



Description:

INVESTORS DREAM! Commercial, Multi-Family, Residential lot. Rebuilt 2012 from the studs. 2012 Sheetrock, insulation. All windows replaced in 2017. 3 full baths. Central heat and AC. House needs to be painted inside and out. NO HOA DUES! Has city utilities and No Water District. Beautiful Oak Trees around the house. Could be used for Multi Family or Residential. Walking distance from University and coffee shop, and Bowling alley.



Acres: 1

List Price: \$250,000

City: Prairie View

County: Waller

State: Texas

Zip: 77445



Tanya Coury



tntbme@gmail.com

281-831-6330





[Texas Real Estate Commission Information About Brokerage Service »](#) | [Texas Real Estate Commission Consumer Protection Notice »](#)

Copyright © 2021 Waller County Land Company. All rights reserved.