

WALLER COUNTY LAND COMPANY

Established 1985

Waller Office: 936.372.9181
Hempstead Office: 979.826.4133

100 Patriots Place - List Price: \$474,995

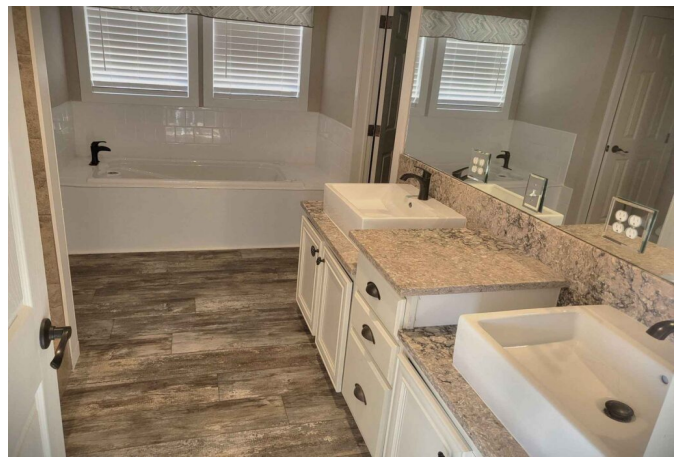
Property Type: Residential

[VIEW ON MAP](#)



Description:

Multi-Generational living! This 2200+ sq ft home features a split floorplan with an impressive primary bedroom with an ensuite luxury bath, a walk-in closet, and its own private exterior door. The 2nd bedroom has a walk-in closet, ensuite full bath and its own private exterior door. This bathroom also provides access with a hallway door. The 3rd bedroom again, offers the same features as the other 2 bedrooms. The treasure of this semi-secluded property is the massive, detached building with its drive-thru roll-up doors that will easily accommodate an RV or your boat. Currently has 4 fenced kennel spaces each has its own floor drain, water spigot & door to the outside fenced run. The other side would easily convert to a 2 bedroom apartment or a really nice home office and workshop. Fully insulated, HVAC is in place and comes with a dog wash station, washer/dryer & bathroom. The property is also wired to accommodate 2RVs with full hookups. From your driveway, the public boat ramp is only 2 miles away!



Acres: 1

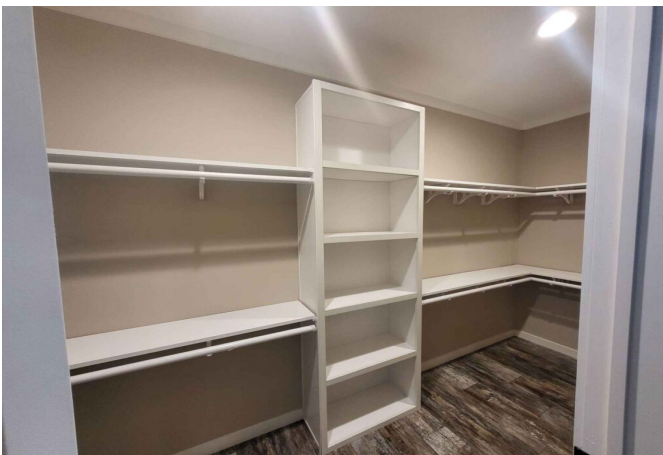
List Price: \$474,995

City: Somerville

County: Burleson

State: Texas

Zip: 77879



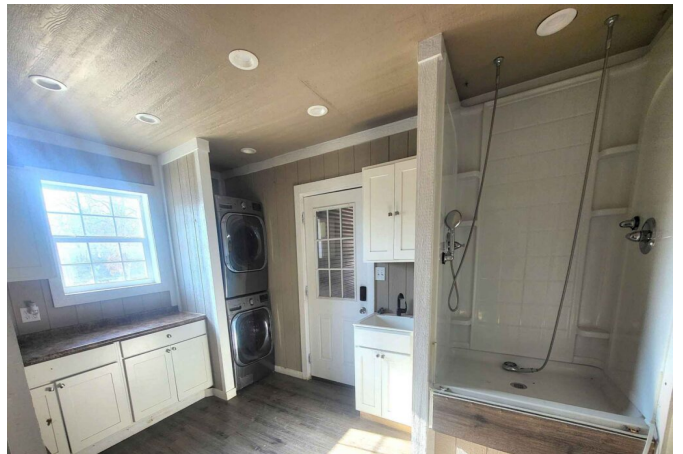
Rebecca Timm



mynewbeginningnow@gmail.com

346-414-7387







[Texas Real Estate Commission Information About Brokerage Service »](#) | [Texas Real Estate Commission Consumer Protection Notice »](#)

Copyright © 2024 Waller County Land Company. All rights reserved.