

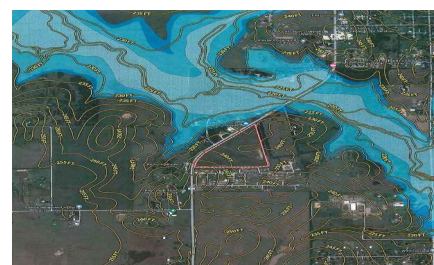
Logo not found or type unknown

Waller Office: 936.372.9181
Hempstead Office: 979.826.4133

0000 FM 362 - List Price: \$2,500,000

Property Type: Acreage, Commercial

[VIEW ON MAP](#)



Description:

Prime 32-Acre Development Opportunity – Residential or Commercial Potential!

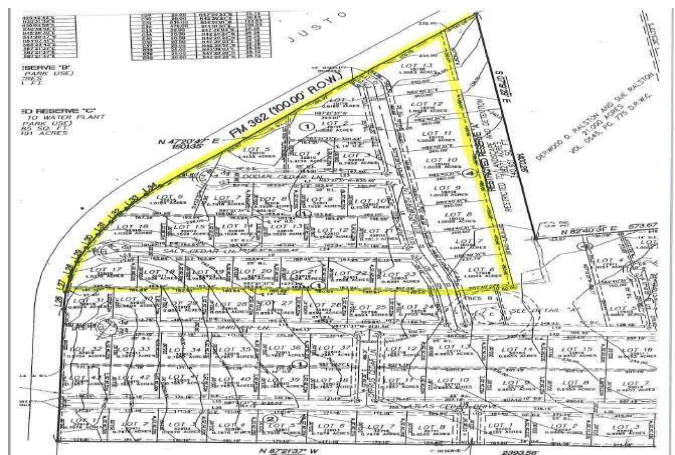
Calling all developers, investors, and visionaries — this 32-acre gem is a rare find offering both residential and commercial potential in one of the fastest-growing areas around. Strategically located with excellent access to Hwy 290, this expansive tract comes fully platted for a 31-lot subdivision, with lots ranging from 0.75 to 1.3 acres — ideal for spacious single-family homes or a thoughtfully planned mixed-use development.

Property Highlights:

- Fully Platted for 31 Lots – Save time and money with subdivision groundwork already done;
- Public Water System Available – Utilities within reach, minimizing infrastructure costs;
- Possible Detention Pond Already in Place – Another major item checked off your list;
- High & Dry – No floodplain concerns;
- Flexible Zoning – Residential or commercial options give you control of your vision;
- Borders Cedar Creek Ranch (Phase 1) – An established, quiet community provides added appeal;
- Strong Local Growth – The area is experiencing rapid expansion and increased demand for large residential lots.

Whether you're ready to break ground on an upscale rural subdivision, envision a live-work-play concept, or create a high-value investment, this property is shovel-ready and packed with potential. All you need to do is build the roads and start construction — the heavy lifting is done. Don't miss this chance to be part of a thriving development scene.

See the Attached Documents for Plat maps, utility access information, and more. Don't miss this chance to secure a shovel-ready development in a rapidly growing area!



Acre: 33

List Price: \$2,500,000

City: Waller

County: Waller

State: Texas

Zip: 77484

Joel Lopez

JoelLopez

Image not found or type unknown

realestatexpert@gmail.com

281-381-0707











[Texas Real Estate Commission Information About Brokerage Service »](#) | [Texas Real Estate Commission Consumer Protection Notice »](#)

Copyright © 2025 Waller County Land Company. All rights reserved.